

# FLOW AIDS



THE WORLDWIDE LEADER IN VIBRATION TECHNOLOGY







## Intro

Company profile	4
Why use flow aids?	6
Where use flow aids?	6
Product range	7

## Internal applications

<b>AERATORS</b>	8
VBS - Bin aerators	9
VBS - External mounting kit	10
VBT - Tank truck aerators	11
I100 - Aeration pads	12
U - Aeration nozzles	13
<b>AIR JET</b>	14
PG - Air blasts	15
PJ - Combined hammer blasts	16

## External applications

<b>LINEAR PNEUMATIC VIBRATORS</b>	18
PS - Single impact	19
P - Continuous impact	20
K - Cushioned	22
F - Adjustable cushioned	23
<b>ROTARY PNEUMATIC VIBRATORS</b>	24
S - Ball	25
OR - Roller	26
OT - Turbine	27
<b>ELECTRIC VIBRATORS</b>	28
MVE-MICRO - 2 poles	29
MVE - 2 poles	30
MVE-DC - Direct current	32
<b>HYDRAULIC VIBRATORS</b>	34
MVO	35



# Worldwide leader in vibration technology

OLI is the world's top selling manufacturer of Electric and Pneumatic Vibrators.

A high level of customer service is guaranteed through 19 OLI Trading Subsidiaries, 36 local warehouses and 5 manufacturing plants worldwide.

## OUR 3 DIVISIONS

PROVIDE CUSTOMERS WITH OPTIMAL SOLUTIONS FOR ALL REQUIREMENTS

### INDUSTRIAL VIBRATORS



Electric motovibrators for vibrating equipments.

### FLOW AIDS



Comprehensive range of electric and pneumatic vibrators to solve any problem of flowability.

### CONCRETE CONSOLIDATION



Internal concrete vibrators and converters for reliable and efficient concrete compaction.

Originally specialising in immersion vibrators for concrete consolidation, OLI is now the worldwide leader in vibration technology, with a **complete range of electric and pneumatic internal and external vibrators**.

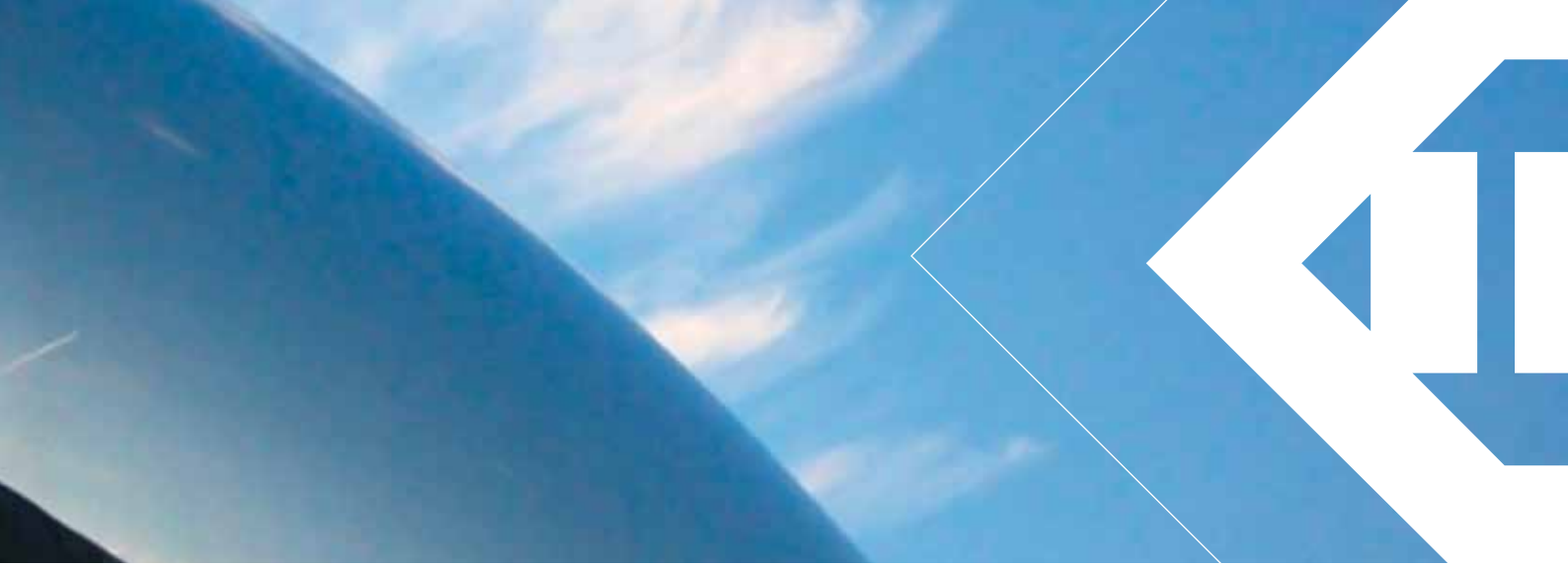
By supplying **competitive, high quality products for wide-ranging applications**, OLI combines **performance** and **reliability** by adapting to the ever-changing market. A strong believer in innovation, OLI is constantly striving to be ahead of the opposition.

As a global player in industrial vibration technology, the key focus of OLI's business strategy is **rapid stock delivery, any time, anywhere in the world**.

Excellent customer service is of pivotal importance: the company guarantees **quick order processing** and customers worldwide can enjoy access to the same high quality product and services.

OLI has access to credible expertise when it comes to finding suitable solutions to customers' requests. A team of engineers specialised in designing efficient, reliable and safe solutions backed by a **globally certified management**.

OLI provide their customers with state-of-the-art equipment and the blueprint for the next generation of products is already in progress.



## SMART POWDER HANDLING

More than 50 years of **EXPERIENCE** in solving material handling problems make OLI the ideal partner for customers across all industries.

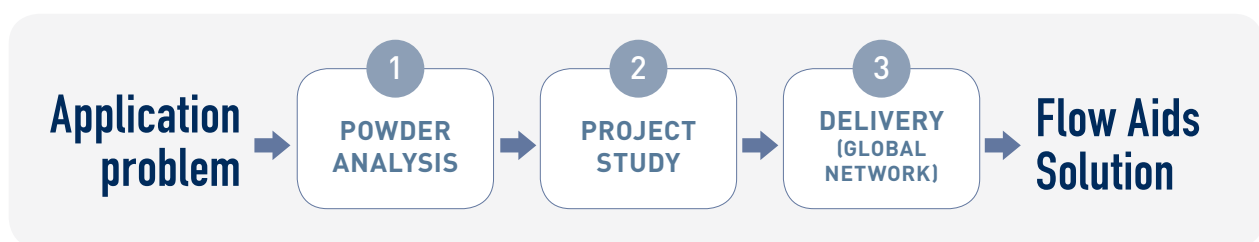
A **GROUP OF SPECIALISTS** is at the customers' disposal to study and offer solutions that perfectly suit any type of application and material present on the market.

OLI analyses problems in the most comprehensive

way: the type of powder to be handled, environmental conditions and the type of process. The **CUSTOMER'S NEEDS** will always be at the centre of attention.

OLI's **GLOBAL SALES NETWORK** assists customers locally in over 50 countries ensuring ex-stock delivery from the subsidiaries' own warehouses.

### OLI GUIDES YOU TO THE RIGHT CHOICE



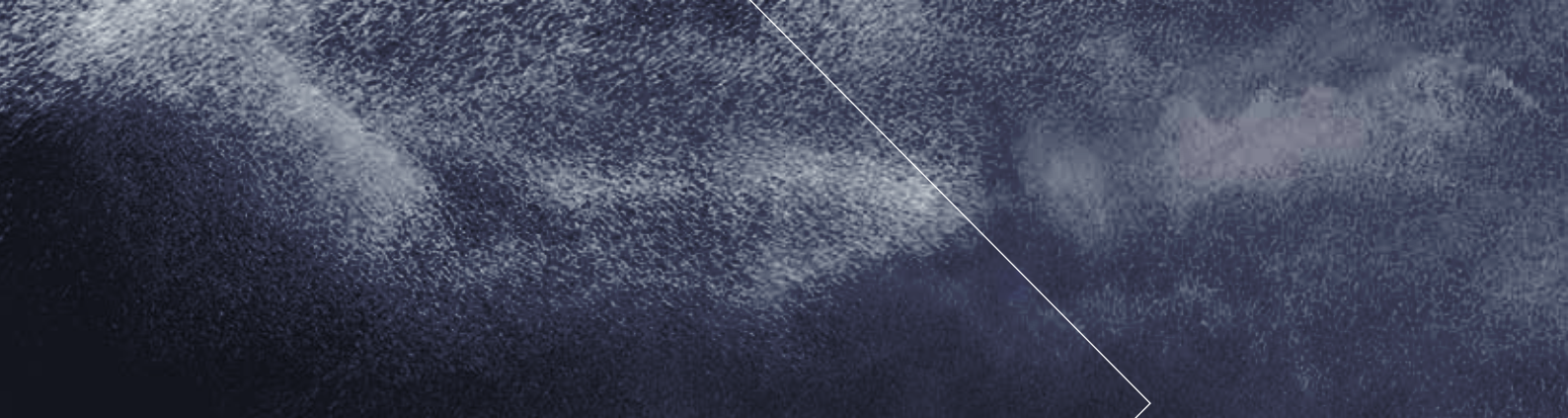
### ONLINE SIZING CALCULATOR

#### NOT TOO BIG, NOT TOO SMALL, JUST RIGHT

To complete the service to the customer, OLI has created an application that guides to the choice of the most suitable vibrator for the project, step-by-step.

#### OLIVIBRA CALCULATOR - MAIN FEATURES

- Available on-line
- Real-time updates
- Multilingual platform



## WHY USE FLOW AIDS?

### SITUATION

Due to their characteristics, many **POWDERS** inside silos, hoppers, chutes, piping, tanks or any other container will tend to **STICK TO THE SURFACE**.

### PROBLEM

Any small change in the opening of the outlet, a rough surface, bends, shallow angles, the shape of the container, as well as the particle shape of the material handled might slow down the flow of the product, thus generating **WASTE**.

### SOLUTION

**FLOW AIDS** are designed to solve issues caused by design errors or by the characteristics of the powder or granules handled. Moreover, they **INCREASE PROCESS EFFICIENCY** and **IMPROVE PLANT SAFETY**.



## WHERE USE FLOW AIDS?

### Industries

Food  
Animal feed  
Fertilizers  
Agriculture  
Pharmaceuticals  
Chemicals  
Plastics  
Cement  
Glass  
Air treatment  
Automotive  
Mining

### Applications

Silos  
Hoppers  
Vibrating feeders  
Screens  
Slides and chutes  
Piping  
Threshers  
Dump trucks

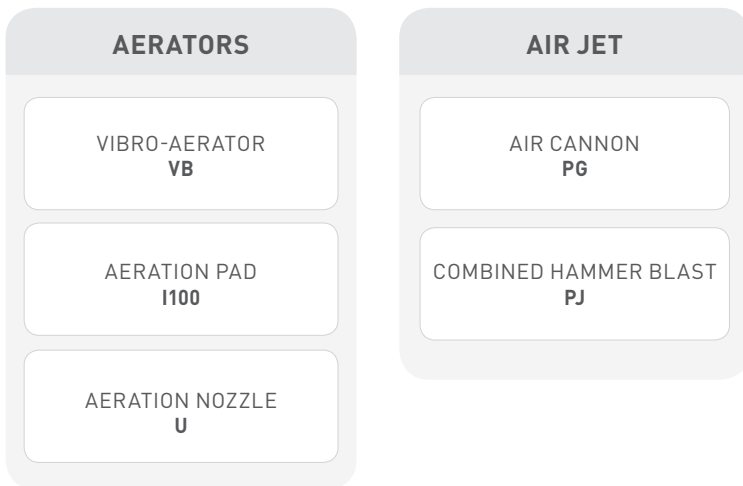
### Benefits

Safe  
Economic  
Robust  
Reliable  
Easy to install  
High performance  
Global availability  
Increased productivity

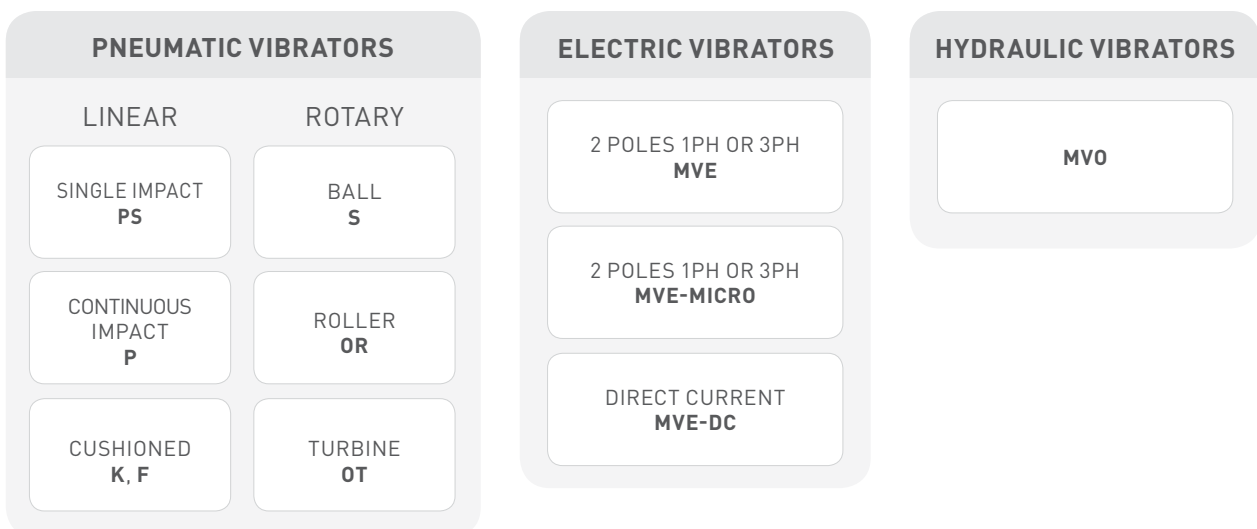


# PRODUCT RANGE

## INTERNAL APPLICATION → IN CONTACT WITH MATERIAL



## EXTERNAL APPLICATION → NOT IN CONTACT WITH MATERIAL



# INTERNAL APPLICATION

## AERATORS

### PRODUCT SERIES

BIN AERATORS  
VB



### APPLICATION

Silos  
Hoppers  
Pipes  
Dry bulk tank trailers  
Dry bulk rail tankers

### POWDER

**Dry, fine powders.**

Cement  
Lime  
Pigments  
Plastics  
Starch  
Flour  
Sugar  
Coffee

### FEATURES

Compatible with foods and chemicals.

### BENEFITS

Economical  
Easy to install  
Efficient  
Durable  
Available in two sizes (MICRO or standard)  
External mounting

AERATION PADS  
I100



Silos  
Hoppers

**Dry, fine powders.**

Suitable for cement, lime

Low air consumption (0.2 bar pressure).  
Create fluid bed.

Economical  
Easy to install  
External mounting kit

AERATION NOZZLES  
U



Silos  
Hoppers

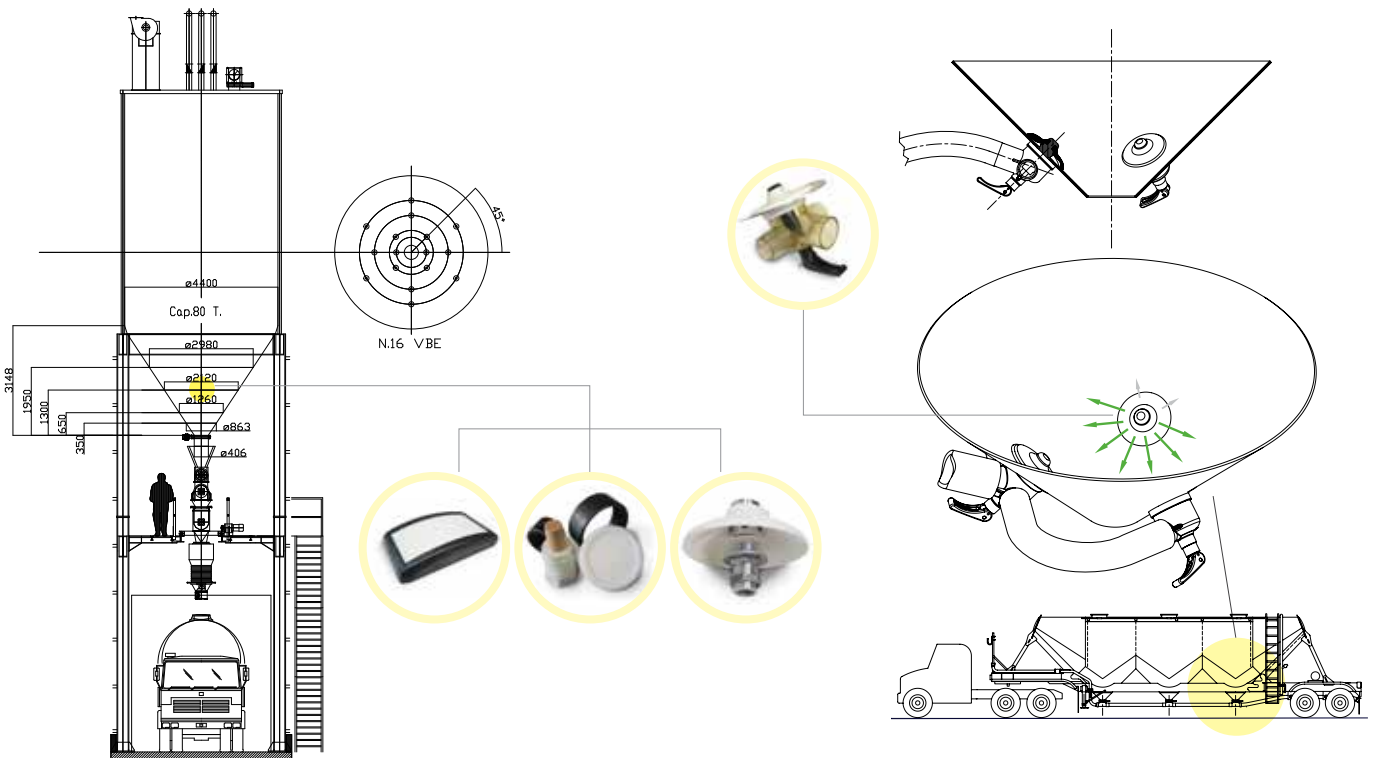
**Dry, fine powders.**

Suitable for cement, lime

Low air consumption (0.2-1 bar pressure).  
Create fluid bed.

Economical  
Easy to install  
Compact design  
Suitable for retrofitting

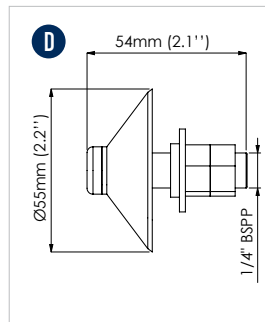
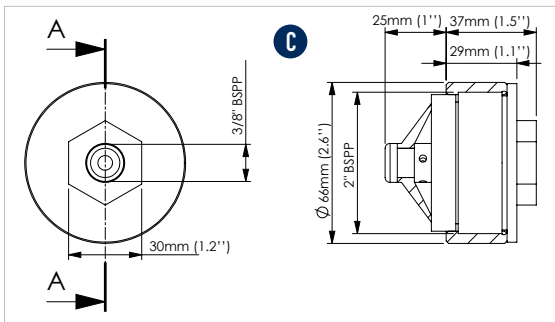
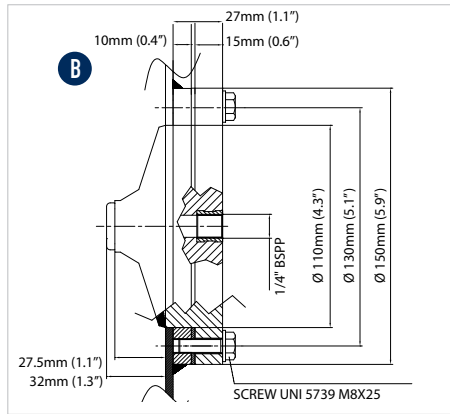
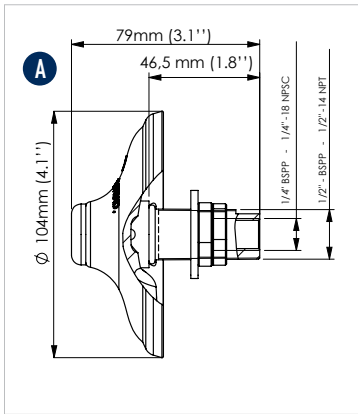
## APPLICATIONS







# VBS - Bin aerators



MODEL	DRAWING	MEMBRANE COLOUR	STEM MATERIAL	AIR CONSUMPTION								WORKING TEMPERATURE			
				0.8 bar (11.6 psi)		2 bar (29 psi)		4 bar (58 psi)		6 bar (87 psi)		°C		°F	
				l/min	Cfm	l/min	Cfm	l/min	Cfm	l/min	Cfm	Min.	Max.	Min.	Max.
VBS	A	White	Aluminium	600	20	800	28	950	33	1150	40	-40	170	-40	338
VBSI	A	White	Stainless steel	600	20	800	28	950	33	1150	40	-40	170	-40	338
VBSIHT	A	Red	Stainless steel	600	20	800	28	950	33	1150	40	-40	235	-40	455
VBSIMD	A	Blue	Stainless steel	600	20	800	28	950	33	1150	40	-40	170	-40	338
VBE	B	White	Nylon	-	-	100	3.53	150	5.29	250	8.82	-40	80	-40	176
VBSME	C	White	Nylon	130	4.6	150	5.3	-	-	-	-	-40	80	-40	176
VBSM	D	White	Aluminium	100	3.5	150	5	-	-	-	-	-40	170	-40	338
VBSMI	D	White	Stainless steel	100	3.5	150	5	-	-	-	-	-40	170	-40	338
VBSMIHT	D	Red	Stainless steel	100	3.5	150	5	-	-	-	-	-40	235	-40	455
VBSMIMD	D	Blue	Stainless steel	100	3.5	150	5	-	-	-	-	-40	170	-40	338

## VBS - BIN AERATORS

APPLICATION	Silos, hoppers, pipes
POWDER	Dry, fine, granular
PROBLEM SOLVING	Bridge and rat-holing

## FEATURES

DUTY CYCLE	Continuous or discontinuous
WORKING PRESSURE	From 0.8 bar to 6 bar (from 12 psi to 87 psi) - Suggested: 4 bar (58 psi) VBSMicro from 0.8 bar to 2 bar (from 12 psi to 29 psi)
PNEUMATIC CIRCUIT	Filter + flow control valve
AIR SUPPLY QUALITY	Non-Lubricated (Class. 5.4.1)
TECHNOLOGY	Vibro-Aerator
MATERIAL	Silicone membrane [food grade] - FDA 177.2600 Aluminium / stainless steel stem [Food & Pharmaceutical grade] Nylon body with steel ring [VBSE]

## OPTIONS

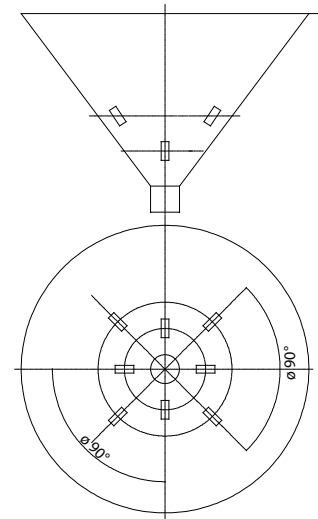
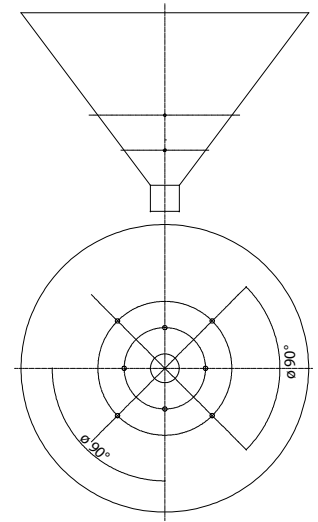
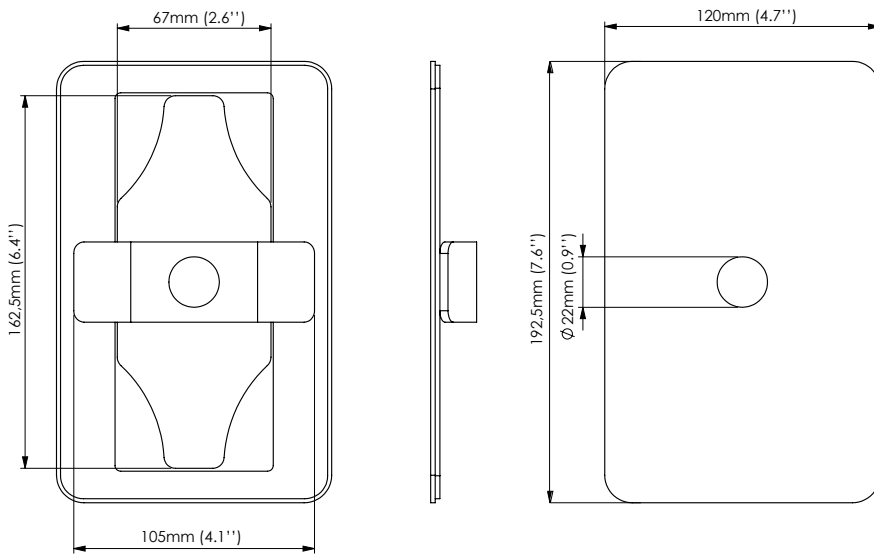
EXTERNAL MOUNTING KIT	Stainless steel rectangular plate and fitting bracket
-----------------------	---



# VBS - Bin aerators - External mounting kit



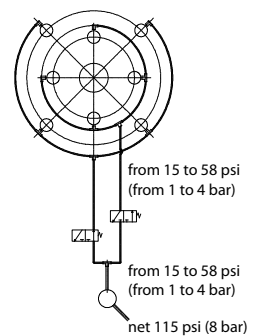
**\* THE VBS IS NOT INCLUDED IN THE EXTERNAL MOUNTING**



## EXTERNAL MOUNTING KIT

MATERIAL	Stainless steel rectangular plate
PROBLEM SOLVING	Allows the installation on silos that are difficult to reach from the inside
SIZE	120 x 192.5 mm [4.72" x 7.58"]
CUT OUT SIZE	67 x 162.5 mm [2.64" x 6.40"]

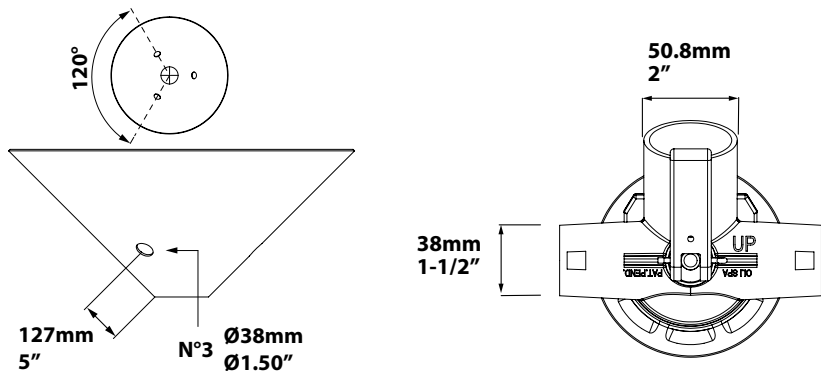
## FLUIDIZER PNEUMATIC CIRCUITS



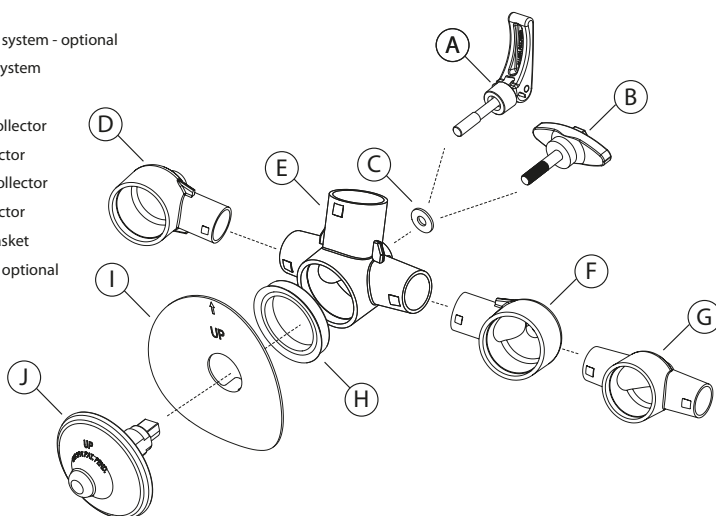
This information is furnished without warranty, representation, inducement or license of any kind. It is accurate to the best OLI knowledge or is obtained from sources believed to be accurate. OLI therefore assumes no legal responsibility.



# VBT - Tank truck aerators



- (A) Cam lever lock system - optional
- (B) T-handle lock system
- (C) Gasket
- (D) LH 1-Way air collector
- (E) 3-Way air collector
- (F) RH 1-Way air collector
- (G) 2-Way air collector
- (H) Air collector gasket
- (I) Hopper saver - optional
- (J) Membrane



## VBT SERIES

APPLICATION	Dry bulk tank trailer, rail tanker
POWDER	Dry, fine, granular
PROBLEM SOLVING	Bridging and rat-holing

## FEATURES

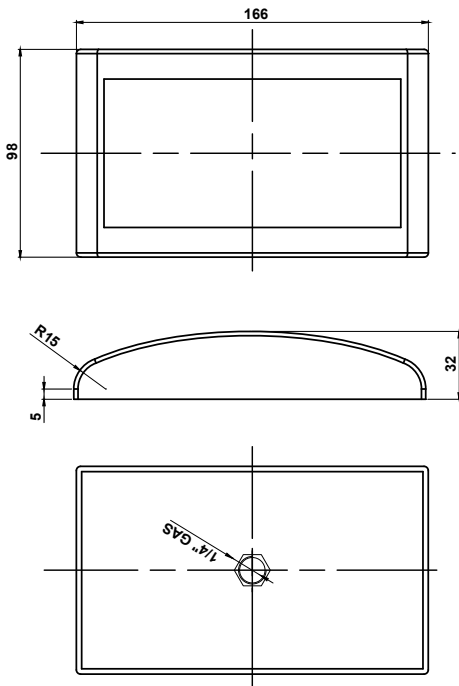
DUTY CYCLE	Continuous (suitable to be used with blower)
WORKING PRESSURE	From 0.7 bar to 2 bar (from 10 psi to 29 psi)
PNEUMATIC CIRCUIT	Suitable standard pneumatic bulk trailer, works with all standard designs
WORKING TEMPERATURE	From -40°C to 170°C (from -40°F to 340°F)
TECHNOLOGY	Vibro-aeration
MATERIAL	Blue silicone membrane - metal detectable, comply with FDA 177.2600 Stem - Black polyarylamide glass-fiber reinforced comply with 10/2011/EC - FDA - UL94 Manifold - Black polyarylamide glass-fiber reinforced comply with 10/2011/EC - FDA - UL94 Manifold - Transparent material comply with ISO 10993 - FDA 21 CFR 177.1655 - NSF 51 - UL94 Lever and T-handle - Black polyarylamide glass-fiber reinforced / Stainless steel thread shaft Silicone gasket

## OPTIONS

CAM LEVER	Shaft material: AISI304
HOPPER SAVER PLATE	Stainless steel



# I100 - Aeration pads



MODEL	AIR CONSUMPTION	
	0.2 bar (2.9 psi)	
	l/min	cfm
I100	2	0.07

## I100 - AERATION PADS

APPLICATION Hopper and silo

POWDER Fine and dust (cement and lime)

PROBLEM SOLVING Bridge and rat-holing

## FEATURES

DUTY CYCLE Continuous

WORKING PRESSURE 0.2 bar (2.9 psi)

PNEUMATIC CIRCUIT Filter + flow control valve

AIR SUPPLY QUALITY Class 5.4.1.

WORKING TEMPERATURE From -20°C to 80°C (from -4°F to 176°F)

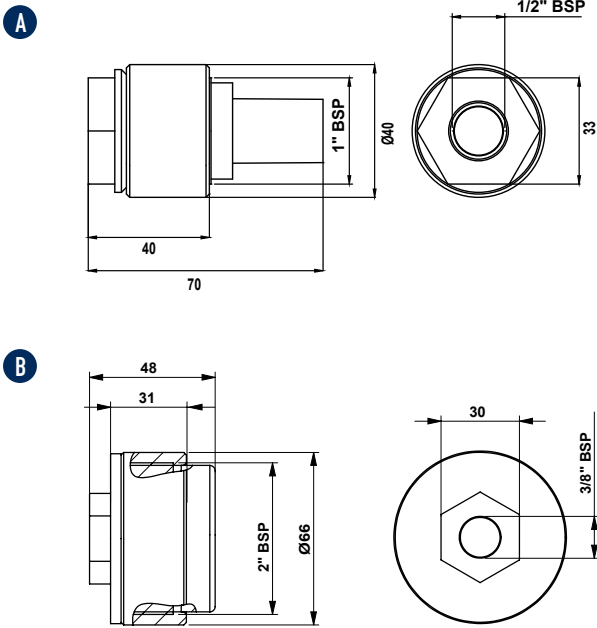
TECHNOLOGY Fluidification

MATERIAL Sintered PET filter, PS body

This information is furnished without warranty, representation, inducement or license of any kind. It is accurate to the best OLI knowledge or is obtained from sources believed to be accurate. OLI therefore assumes no legal responsibility.



# U - Aeration nozzles



MODEL	DRAWINGS	AIR CONSUMPTION			
		0.2 bar (2.9 psi)		1 bar (14 psi)	
		l/min	Cfm	l/min	Cfm
U025	A	0.83	0.03	-	-
U060	B	-	-	30	1.1

## U - AERATION NOZZLES

APPLICATION	Hopper and silo - piping
POWDER	Fine and dust (cement and lime)
PROBLEM SOLVING	Bridge and rat-holing

## FEATURES

DUTY CYCLE	Continuous
WORKING PRESSURE	From 0.2 bar to 1 bar (from 2.9 psi to 14 psi)
PNEUMATIC CIRCUIT	Filter + flow control valve
AIR SUPPLY QUALITY	Class 5.4.1
WORKING TEMPERATURE	From -20°C to 80°C (from -4°F to 176°F)
TECHNOLOGY	Fluidification
MATERIAL	U060 - ring carbon steel, sintered PE filter, Nylon (UV resistant) body U025 - ring carbon steel, sintered brass filter, Nylon (UV resistant) body

This information is furnished without warranty, representation, inducement or license of any kind. It is accurate to the best OLI knowledge or is obtained from sources believed to be accurate. OLI therefore assumes no legal responsibility.

# INTERNAL APPLICATION



## PRODUCT SERIES

Air blasts - Gunjet  
PG



## APPLICATION

Silos  
Hoppers

## POWDER

**Powders of large particle size and irregular shape; fibrous powders and flakes.**

Wood fibres  
Textile fibres  
Paper  
Plastics  
Bran

## FEATURES

Compact design with integrated solenoid valve.  
The air blade generated by the high pressure jet helps to clean the hopper surface.

## BENEFITS

Suitable for bridge breaking  
Economical  
Easy to install  
Low air consumption  
Mounting plate included

Combined Hammer Blasts - Picjet  
PJ



Silos  
Hoppers

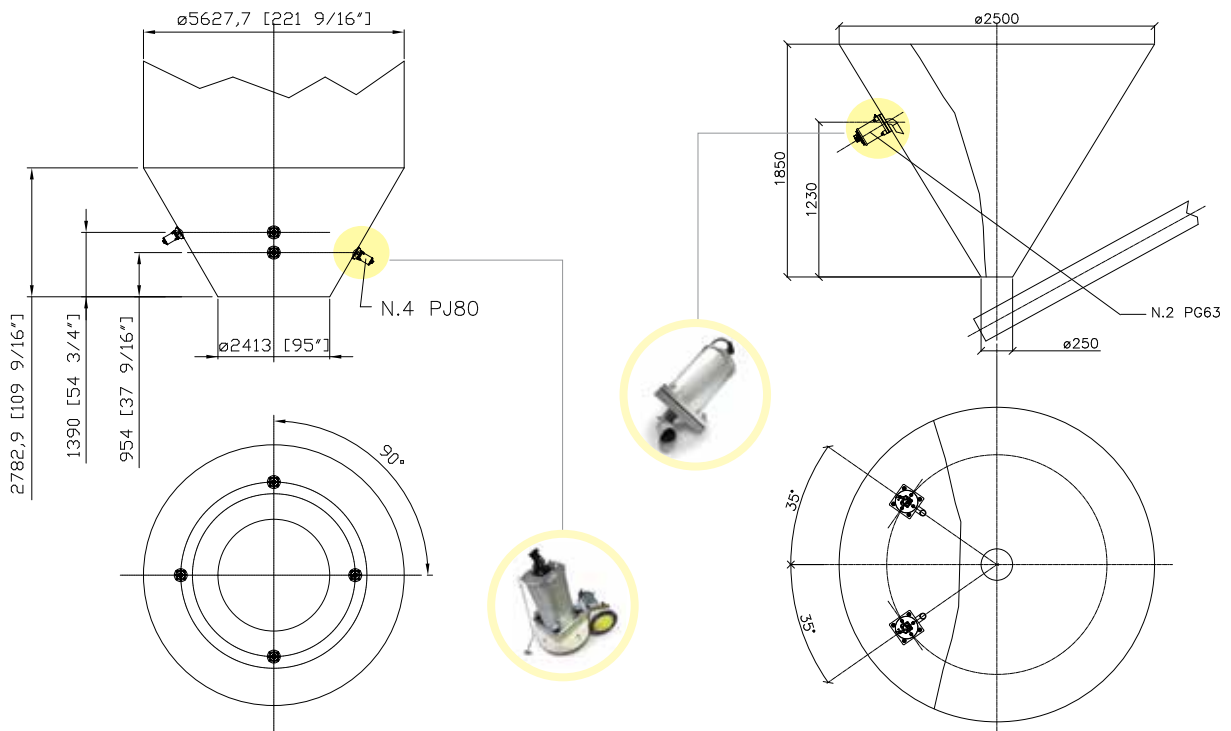
**Lime and ceramic powders.**

Cement  
Ashes  
Vegetable meals  
Fertilizers  
Detergents  
Pigments  
Clay  
Oxides

Compact design with integrated solenoid valve.  
The combined effect of the air jet plus. Single impact ensures excellent results in eliminating bridging or ratholing.

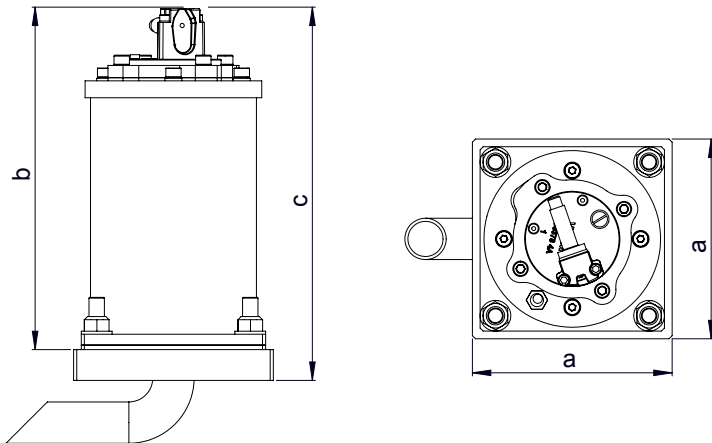
Efficient  
Easy to install  
Combined effect  
Innovative  
Supplied with mounting plate

## APPLICATIONS





# PG - Air blasts



MODEL	AIR CONSUMPTION (NL)		I Ø PIPE mm	AIR INLET BSPP	DIMENSIONAL SPECIFICATIONS		
	3 bar	6 bar			A	B	C
					mm	mm	mm
PG 40	3.6	5.3	6	1/8" BSPP	130	220	243
PG 63	6.4	11.6	8	1/4" BSPP	160	260	283
PG 80	12.5	21	8	1/4" BSPP	200	308	336

## PG - AIR BLASTS

APPLICATION	Hopper and silo
POWDER	Large size, irregular shape, fibrous dust and flakes
PROBLEM SOLVING	Bridge and rat-holing

## FEATURES

DUTY CYCLE	Discontinuous
WORKING PRESSURE	From 3 bar to 6 bar (from 43 psi to 87 psi)
PNEUMATIC CIRCUIT	Filter + flow control valve
AIR SUPPLY QUALITY	Class 5.4.1.
WORKING TEMPERATURE	From -20°C to 80°C (from -4°F to 176°F)
MAX NOISE LEVEL	105 dB (a)
TECHNOLOGY	High pressure jet
MATERIAL	Steel body and plate, PS040-063 nylon (PS080 aluminium) head

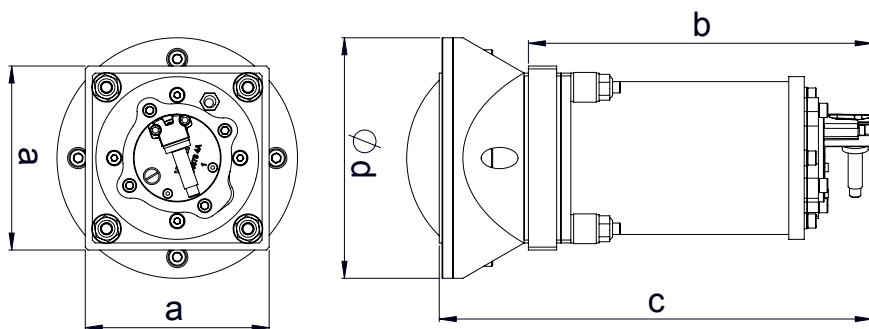
## OPTIONS

TIMER	Adjustable from 30sec to 45min
MULTI-TENSION COILS	From 24v (Ac/Dc) to 230v
FULLY PNEUMATIC KIT	Available

This information is furnished without warranty, representation, inducement or license of any kind. It is accurate to the best OLI knowledge or is obtained from sources believed to be accurate. OLI therefore assumes no legal responsibility.



# PJ - Air Jet - Combined hammer blasts



DIMENSIONAL SPECIFICATIONS				
MODEL	A	B	C	ØD
	mm	mm	mm	mm
PJ 40	130	220	306	170
PJ 63	160	260	363	222
PJ 80	200	308	435	280

MODEL	ENERGY (J)	FORCE (N)	ENERGY (J)	FORCE (N)	AIR CONSUMPTION (NL)		I Ø PIPE	AIR INLET
	3 bar		6 bar		3 bar	6 bar	mm	BSPP
PJ 40	8.4	199	18.1	429	3.6	5.3	6	1/8" BSPP
PJ 63	28.8	589	62	1268	6.4	11.6	8	1/4" BSPP
PJ 80	59.2	846	153	2186	12.5	21	8	1/4" BSPP

## PJ - AIR JET - COMBINED HAMMER BLASTS

APPLICATION	Hopper and silo
POWDER	Fine and dust
PROBLEM SOLVING	Bridge and rat-holing

## FEATURES

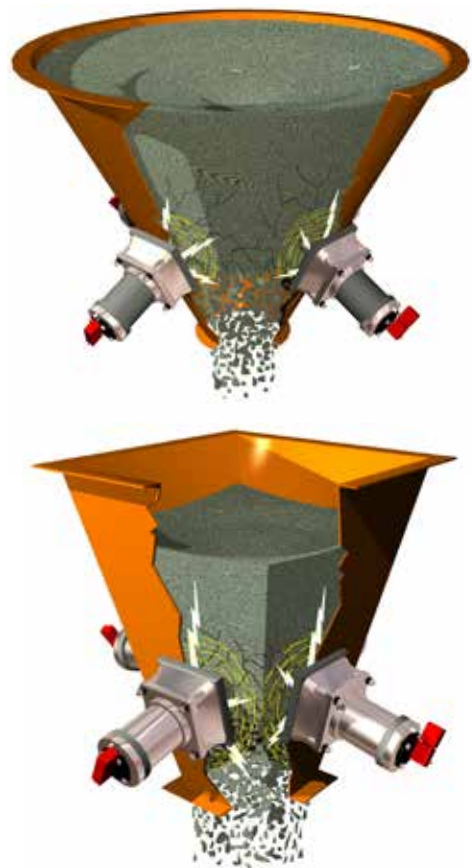
DUTY CYCLE	Discontinuous
WORKING PRESSURE	From 3 bar to 6 bar (from 43 psi to 87 psi)
PNEUMATIC CIRCUIT	Filter + flow control valve
AIR SUPPLY QUALITY	Class 5.4.1.
WORKING TEMPERATURE	From -20°C to 80°C (from -4°F to 176°F)
MAX NOISE LEVEL	125 dB(a)
TECHNOLOGY	Single impact + high pressure blast
MATERIAL	Steel body, nylon base, steel attachment plate, PS040-063 nylon (PS080 aluminium) head

## OPTIONS

TIMER	Adjustable from 30sec to 45min
MULTI-TENSION COILS	From 24V (ac/dc) to 230V
FULLY PNEUMATIC KIT	Available





This information is furnished without warranty, representation, inducement or license of any kind. It is accurate to the best OLI knowledge or is obtained from sources believed to be accurate. OLI therefore assumes no legal responsibility.



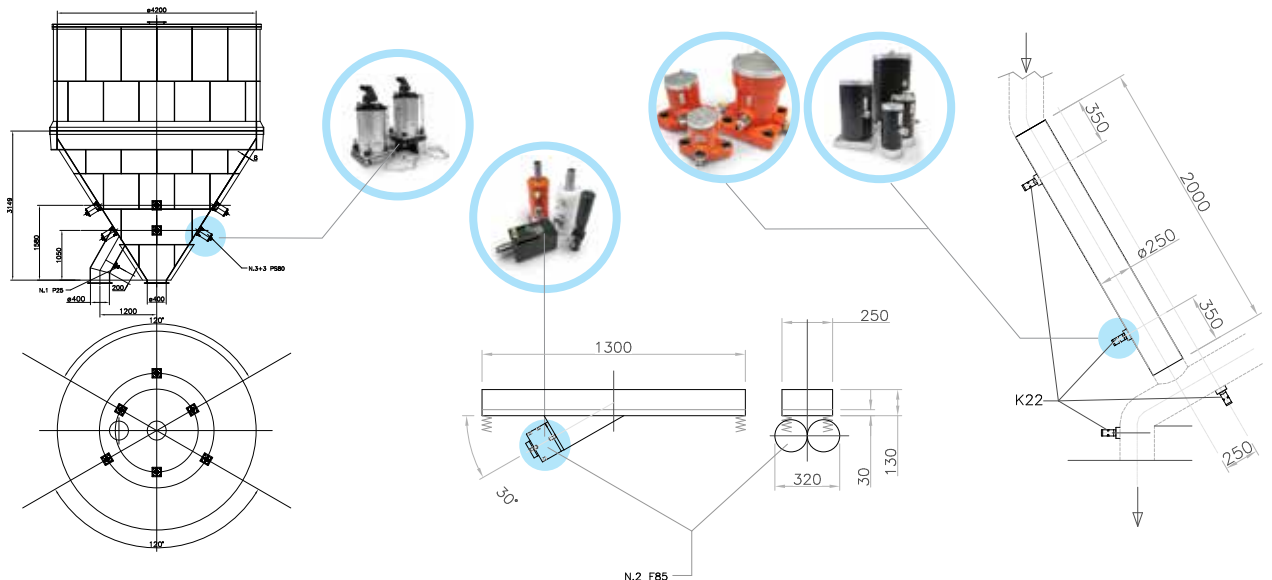


# EXTERNAL APPLICATION

## LINEAR PNEUMATIC VIBRATORS

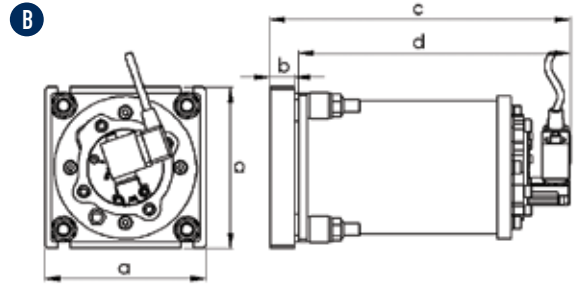
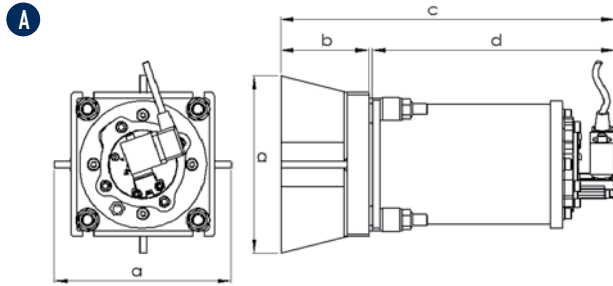
PRODUCT SERIES	APPLICATION	POWDER	FEATURES	BENEFITS
<b>SINGLE IMPACT - MARTSHOCK PS</b> 	Silos Storage systems Hoppers	<b>Hygroscopic powders.</b> Flour Detergents Phosphates Fertilizers Lime Cement Clay Pigments	High impact strength solves bridging or rat holing problems. Atex II3D T85 °C (pneumatic only).	Economical Low air consumption Efficient Zero impact on silo structure Multi-voltage Integrated solenoid valve Timer
<b>CONTINUOUS IMPACT P</b> 	Silos Hoppers Piping Salt spreaders Dump trucks Rail cars	<b>Hygroscopic, humid powders.</b> Sludge Aggregates Sand Salt Foundry sand Animal feed	Sturdy, compact heavy-duty design, high temperature applications. Atex II2GD T200 °C.	Economical Low air consumption Efficient Suitable for high temperature and outdoor applications
<b>CUSHIONED K</b> 	Silos Hoppers Piping Tanks Compacting Vibrating feeders, tables and channels	<b>Hygroscopic or dusty powders, granules.</b> Animal feed Aggregates Plastics Foods	Suitable for food or chemical applications Suitable for dusty environments. Atex II2GD T135°C.	Economical Silent Low air consumption Easy to install
<b>ADJUSTABLE CUSHIONED F</b> 	Hoppers Chutes Vibrating feeders, Tables and channels	<b>Hygroscopic or dusty powders; granules.</b>	Alternative option to K. Compact design. Available in different shapes and casing materials. Threaded shaft for amplitude and force adjustment. Atex II2GD T210°C.	Economical Silent Low air consumption Easy to install Adjustable force and vibration frequency

## APPLICATIONS





# PS - Linear pneumatic vibrators - Single impact



DIMENSIONAL SPECIFICATIONS - PS TYPE "A" [≤ 3MM HOPPER THICKNESS]

MODEL	A	B	C	D
	mm	mm	mm	mm
PS 40	160	80	302	219
PS 63	200	95	357	259
PS 80	250	119	430	308

DIMENSIONAL SPECIFICATIONS - PS TYPE "B" [> 3MM HOPPER THICKNESS]

MODEL	A	B	C	D
	mm	mm	mm	mm
PS 40	130	20	242	219
PS 63	163	20	282	259
PS 80	200	25	336	308



MODEL	ENERGY (J)	FORCE (N)	ENERGY (J)	FORCE (N)	AIR CONSUMPTION (NL)		I Ø PIPE	AIR INLET
	3 bar		6 bar		3 bar	6 bar	mm	BSPP
	PS 40	8.4	199	18.1	429	3.6	5.3	6
PS 63	28.8	589	62	1268	6.4	11.6	8	1/4" BSPP
PS 80	59.2	846	153	2186	12.5	21	8	1/4" BSPP

## PS - LINEAR PNEUMATIC VIBRATORS - SINGLE IMPACT

APPLICATION	Hopper and silo
POWDER	Hygroscopic
PROBLEM SOLVING	Bridge and rat-holing

## FEATURES

DUTY CYCLE	Discontinuous
WORKING PRESSURE	From 3 bar to 6 bar (from 43 psi to 87 psi)
PNEUMATIC CIRCUIT	Filter + flow control valve
AIR SUPPLY QUALITY	Class 5.4.1.
WORKING TEMPERATURE	From -20°C to 80°C (from -4°F to 176°F)
MAX NOISE LEVEL	125 dB(a)
TECHNOLOGY	Single impact
MATERIAL	Steel body, steel attachment plate, PS040-063 nylon (PS080 aluminium) head

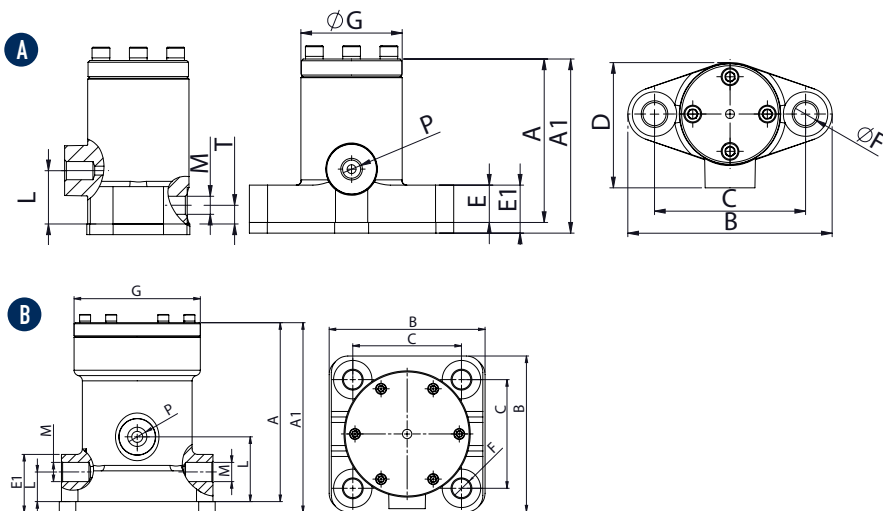
## OPTIONS

KIT ATEX	II 3D C T85°C - PP plate, technothane tablet
TIMER	Adjustable from 30sec to 45min
MULTI-TENSION COILS	From 24V (ac/dc) to 230V
FULLY PNEUMATIC KIT	Available

This information is furnished without warranty, representation, inducement or license of any kind. It is accurate to the best OLI knowledge or is obtained from sources believed to be accurate. OLI therefore assumes no legal responsibility.



# P - Linear pneumatic vibrators - Continuous impact



DIMENSIONAL SPECIFICATIONS

MODEL	DRAW.	A		A1		B		C		D		E		E1		F		G		H		P	L		M		N		WEIGHT	
		mm	in	mm	in	mm	in	mm	in	mm	in	mm	in	mm	in	mm	in	mm	in	mm	in		IN BSPP	mm	in	OUT BSPP	mm	in	kg	lb
P25	A	92	3.62	98	3.90	115	4.52	85	3.34	70	2.75	21	0.80	27	1.06	13	0.51	58	2.28	30	1.18	1/4"	10.5	0.41	1/4"	25	0.98	2.2	4.9	
P40	A	121	4.76	127	5.00	148	5.8	110	4.33	91	3.58	25	1.00	31	1.22	17	0.67	75	2.95	45	1.77	3/8"	16	0.63	3/8"	35	1.37	4.5	9.9	
P60	B	163	6.41	173	6.4	138x142	5.4x5.5	99x99	3.9x3.9	125	4.92	28	1.1	38	1.50	17	0.67	115	4.52	60	2.36	1/2"	27	1.06	2x1/2"	60	2.36	11	24.3	

MODEL	2 bar - 29 psi								4 bar - 58 psi								6 bar - 87 psi							
	VIBRATION		FORCE		WORKING MOMENT		AIR CONSUMP.		VIBRATION		FORCE		WORKING MOMENT		AIR CONSUMP.		VIBRATION		FORCE		WORKING MOMENT		AIR CONSUMP.	
	V/min	N	lb	kg*cm	in*lb	l/min	Cfm	V/min	N	lb	kg*cm	in*lb	l/min	Cfm	V/min	N	lb	kg*cm	in*lb	l/min	Cfm			
P25	2500	294	66.1	0.43	0.37	55	1.94	3800	680	152.9	0.43	0.37	80	2.83	4500	954	214.5	0.43	0.37	200	7.1			
P40	1650	484	108.8	1.63	1.41	31	1.09	2200	860	193.3	1.63	1.41	120	4.24	2800	1396	313.8	1.63	1.41	250	8.8			
P60	1200	1296	291.3	4.11	3.57	100	3.53	1600	2304	517.9	4.11	3.57	250	8.83	1900	3250	730.6	4.11	3.57	400	14.1			

## P - LINEAR PNEUMATIC VIBRATORS - CONTINUOUS IMPACT

**APPLICATION** Hopper silo - salt spreader - dump trailer - rail cart

**POWDER** Hygroscopic - humid - sticky

**PROBLEM SOLVING** Bridge and rat-holing

## FEATURES

**DUTY CYCLE** Continuous

**WORKING PRESSURE** From 2 bar to 6 bar (from 29 psi to 87 psi)

**PNEUMATIC CIRCUIT** Filter + flow control valve + lubrication + 3/2 ways valve

**AIR SUPPLY QUALITY** Class 5.4.4.

**WORKING TEMPERATURE** From -20°C to 200°C (from -4°F to 392°F)

**MAX NOISE LEVEL** 100 dB(a)

**TECHNOLOGY** Piston pneumatic impact

**MATERIAL** Grey cast iron body (powder painted) - aluminium cover

## OPTIONS

**KIT ATEX** II 2D CT(X)  
II 2G CT(X)

**SAFETY CHAIN** Available

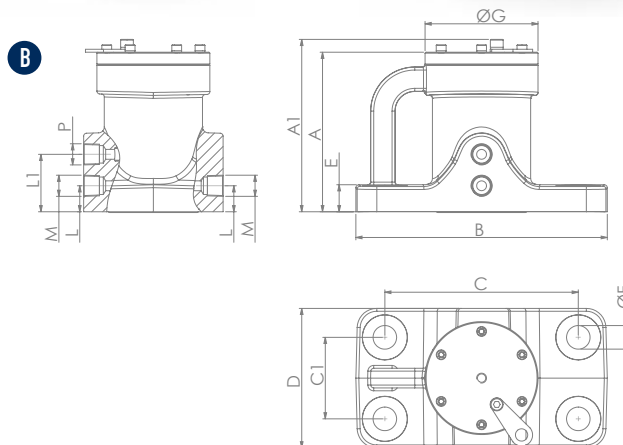
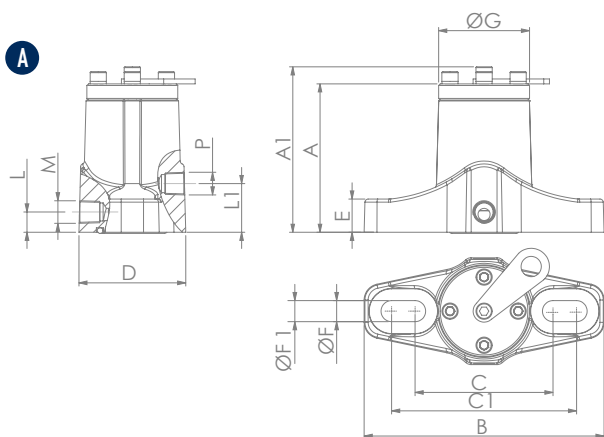
This information is furnished without warranty, representation, inducement or license of any kind. It is accurate to the best OLI knowledge or is obtained from sources believed to be accurate. OLI therefore assumes no legal responsibility.





# P-US - Linear pneumatic vibrators - Continuous impact

COMPATIBLE WITH MOST COMMON US FOOT PRINT



DIMENSIONAL SPECIFICATIONS

MODEL	DRAW.	A		A1		B		C		C1		D		E		ØF		ØF1		ØG		P	L		L1		M		WEIGHT	
		mm	in	mm	in	mm	in	mm	in	mm	in	mm	in	mm	in	mm	in	mm	in	mm	in	IN NPT	mm	in	mm	in	OUT NPT	kg	lb	
P10 R	A	91.5	3.57	102.0	3.98	148	5.77	85	3.32	114	4.45	66	2.57	21	0.80	13	0.51	/	/	56	2.18	1/4"	30	1.17	12.5	0.49	1/4"	2.2	4.9	
P20 R	A	120.5	4.70	133.5	5.21	234	9.13	110	4.29	191	7.45	96	3.74	24.5	0.96	19	0.74	17	0.66	75	2.93	3/8"	44.5	1.74	19	0.72	3/8"	5.5	12.1	
P30 R	A	162.5	6.34	175.5	6.84	235	9.17	153	5.97	190	7.41	130	5.07	27.5	1.07	16	0.62	/	/	115	4.49	1/2"	58.5	2.28	26.5	1.03	1/2"	11.0	24.3	
P30 S	B					256	9.98	197	7.68	83	3.24	142	5.54			24	0.94	/	/									14.0	30.9	

MODEL	2 bar - 29 psi								4 bar - 58 psi								6 bar - 87 psi							
	VIBRATION		FORCE		WORKING MOMENT		AIR CONSUMP.		VIBRATION		FORCE		WORKING MOMENT		AIR CONSUMP.		VIBRATION		FORCE		WORKING MOMENT		AIR CONSUMP.	
	V/min	N	lb	kg*cm	in*lb	l/min	Cfm	V/min	N	lb	kg*cm	in*lb	l/min	Cfm	V/min	N	lb	kg*cm	in*lb	l/min	Cfm	V/min	N	lb
P10 R	2500	294	66.1	0.43	0.37	55	1.94	3800	680	152.9	0.43	0.37	80	2.83	4500	954	214.5	0.43	0.37	200	7.1			
P20 R	1650	484	108.8	1.63	1.41	70	1.09	2200	860	193.3	1.63	1.41	120	4.24	2800	1396	313.8	1.63	1.41	250	8.8			
P30 R	1200	1296	291.3	4.11	3.57	100	3.53	1600	2304	517.9	4.11	3.57	250	8.83	1900	3250	730.6	4.11	3.57	400	14.1			
P30 S																								

**P-US - LINEAR PNEUMATIC VIBRATORS - CONTINUOUS IMPACT**

APPLICATION Hopper silo - salt spreader - dump trailer - rail cart

POWDER Hygroscopic - humid - sticky

PROBLEM SOLVING Bridge and rat-holing

**FEATURES**

DUTY CYCLE Continuous

WORKING PRESSURE From 2 bar to 6 bar (from 29 psi to 87 psi)

PNEUMATIC CIRCUIT Filter + flow control valve + lubrication + 3/2 ways valve

AIR SUPPLY QUALITY Class 5.4.4.

WORKING TEMPERATURE From -20°C to 200°C (from -4°F to 392°F)

MAX NOISE LEVEL 100 dB(a)

TECHNOLOGY Piston pneumatic impact

MATERIAL Grey cast iron body (powder painted) - aluminium cover

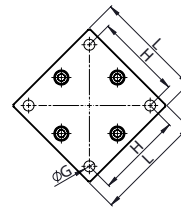
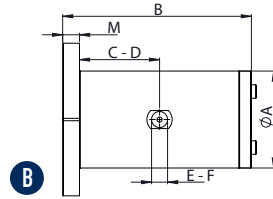
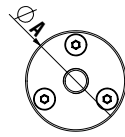
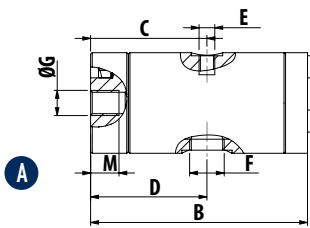
**OPTIONS**

KIT ATEX II 2D CT(X)  
II 2G CT(X)

SAFETY CHAIN Available



# K - Linear pneumatic vibrators - Cushioned



DIMENSIONAL SPECIFICATIONS																						
MODEL	DRAW.	A		B		C		D		E		F		G	H		L		M		WEIGHT	
		mm	in	mm	in	mm	in	mm	in	IN	OUT		mm	in	mm	in	mm	in	mm	in	kg	lb
K 15 - K 15 LF	A	32	1.26	69	2.72	37	1.46	37	1.46	M5	1/8" BSPP	M8	/	/	/	/	/	/	9	0.35	0.17	0.37
K 22 - K 22 LF	A	45	1.77	105	4.13	56	2.2	56	2.2	1/8" BSPP	1/8" BSPP	M10	/	/	/	/	/	13	0.51	0.5	1.1	
K 30 - K 30 LF	A	60	2.36	116	4.57	62	2.44	62	2.44	1/4" BSPP	1/4" BSPP	M12	/	/	/	/	/	13	0.51	1.03	2.27	
K 45 - K 45 LF	B	80	3.15	151	5.94	78	3.07	78	3.07	1/4" BSPP	3/8" BSPP	ø 8.5	72	2.83	90	3.54	15	0.59	2.86	6.3		
K 60 - K 60 LF	B	115	4.53	224	8.82	115	4.53	115	4.53	1/2" BSPP	1/2" BSPP	ø 13	102	4.02	130	5.12	20	0.79	4.6	10.14		

LF = Lubrication Free

MODEL	2 BAR - 29 PSI							4 BAR - 58 PSI							6 BAR - 87 PSI												
	VIBRATION		FORCE		WORKING MOMENT		AIR CONSUMP.		VIBRATION		FORCE		WORKING MOMENT		AIR CONSUMP.		VIBRATION		FORCE		WORKING MOMENT		AIR CONSUMP.				
	VPM	N	lb	kg*cm	in*lb	l/min	cfm	VPM	N	lb	kg*cm	in*lb	l/min	cfm	VPM	N	lb	kg*cm	in*lb	l/min	cfm	VPM	N	lb	kg*cm	in*lb	l/min
K 15	5040	33.39	7.50	0.02	0.02	9	0.3	5880	45.45	10.21	0.02	0.02	15	0.5	6720	59.37	13.34	0.02	0.02	21	0.7						
K 22	2880	95.41	21.44	0.21	0.18	32	1.1	3480	139.30	31.31	0.21	0.18	50	1.8	4080	191.48	43.03	0.21	0.18	73	2.6						
K 30	2640	171.79	38.61	0.45	0.39	45	1.6	3120	239.94	53.92	0.45	0.39	90	3.2	3720	341.10	76.66	0.45	0.39	140	4.9						
K 45	1920	390.93	87.85	1.94	1.68	56	2	2400	610.82	137.27	1.94	1.68	125	4.4	2580	705.88	158.63	1.94	1.68	194	6.8						
K 60	1260	722.65	162.40	8.31	7.21	70	2.7	1560	1107.74	248.94	8.31	7.21	125	4.4	2160	2123.71	477.27	8.31	7.21	202	7.1						
K 15 LF	5040	33.39	7.50	0.02	0.02	9	0.3	5880	45.45	10.21	0.02	0.02	15	0.5	6720	59.37	13.34	0.02	0.02	21	0.7						
K 22 LF	2880	81.78	18.38	0.18	0.16	32	1.1	3480	119.40	26.83	0.18	0.16	50	1.8	4080	164.13	36.88	0.18	0.16	73	2.6						
K 30 LF	2640	160.34	36.03	0.42	0.36	45	1.6	3120	223.95	50.33	0.42	0.36	90	3.2	3720	318.36	71.55	0.42	0.36	140	4.9						
K 45 LF	1920	394.16	88.58	1.95	1.69	56	2	2400	615.87	138.41	1.95	1.69	125	4.4	2580	711.71	159.95	1.95	1.69	194	6.8						
K 60 LF	1260	722.65	162.40	8.31	7.21	70	2.7	1560	1107.74	248.94	8.31	7.21	125	4.4	2160	2123.71	477.27	8.31	7.21	202	7.1						

LF = Lubrication Free

## K - CUSHIONED LINEAR PNEUMATIC VIBRATORS

APPLICATION	Hopper silo - compaction - vibrating feeder - table and channel
POWDER	Hygroscopic - dusty and granular
PROBLEM SOLVING	Detaching and compacting

## FEATURES

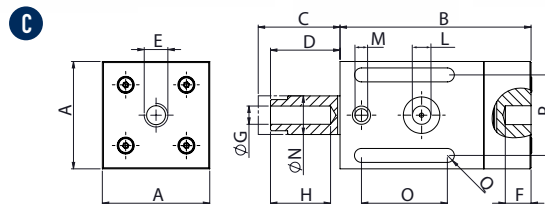
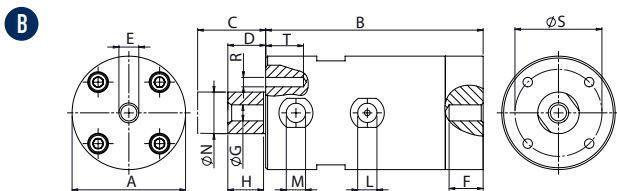
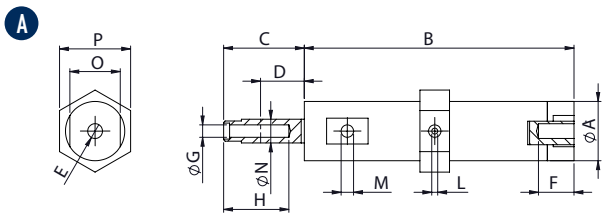
DUTY CYCLE	Continuous
WORKING PRESSURE	From 2 bar to 6 bar (from 29 psi to 87 psi)
PNEUMATIC CIRCUIT	K: Filter + flow control valve + lubrication + 3/2 ways valve K-LF: Filter + flow control valve + 3/2 ways valve
AIR SUPPLY QUALITY	K: Class 5.4.4 K-LF: Class 5.4.1
WORKING TEMPERATURE	From -20°C to 130°C (from -4°F to 266°F)
MAX NOISE LEVEL	80dB(a)
TECHNOLOGY	Piston pneumatic cushioned
ATEX	II 2D CT(X) II 2G CT(X)
MATERIAL	Aluminium body

This information is furnished without warranty, representation, inducement or license of any kind. It is accurate to the best OLI knowledge or is obtained from sources believed to be accurate. OLI therefore assumes no legal responsibility.





# F - Linear pneumatic vibrators - Adjustable cushioned



## DIMENSIONAL SPECIFICATIONS

MODEL	DRAW.	A		B		C		D		E		F		G		H		I		L		M		N		O		P		Q		R		S		T		WEIGHT	
		mm	in	mm	in	mm	in	mm	in	mm	in	mm	in	mm	in	mm	in	mm	in	mm	in	mm	in	mm	in	mm	in	mm	in	mm	in	mm	in	mm	in	mm	in	kg	lb
F8	A	20	0.79	91	3.58	30	1.18	5	0.2	M6	10	0.39	M5	20	0.79	7	0.28			M5	M5	8	0.32	17	0.67	24	0.94	/	/	/	/	/	/	/	/	/	/	0.09	0.21
F15	B	50	1.97	115	4.53	41	1.61	7	0.28	M10	15	0.59	M10	15	0.59	13	0.51	1/8" BSPP	1/8" BSPP	15	0.59	12	0.47	/	/	36	1.42	M6	18	0.70	36	1.41	1.5	3.31					
F15P	B	50	1.97	115	4.53	39	1.54	9	0.35	M10	15	0.59	M10	22	0.87	13	0.51	1/8" BSPP	1/8" BSPP	16	0.63	/	/	/	/	/	/	M6	12	0.47	36	1.41	0.5	1.1					
F18	C	50	1.97	89	3.50	32	1.26	10	0.39	M10	10	0.39	M10	26	1.02	12	0.47	1/8" BSPP	1/8" BSPP	18	0.71	40	1.57	37.5	1.48	6.5	0.26	/	/	/	/	/	/	/	/	/	0.6	1.32	
F25	B	60	2.36	115	4.53	45	1.77	10	0.39	M10	15	0.59	M10	15	0.59	19	0.75	1/4" BSPP	1/4" BSPP	22	0.87	15	0.59	/	/	46	1.81	M6	18	0.70	46	1.81	2.3	5.07					
F40	B	85	3.35	140	5.51	57	2.24	13	0.51	M16	17	0.67	M16	20	0.79	36	1.42	1/4" BSPP	3/8" BSPP	40	1.57	20	0.79	/	/	65	2.56	M6	16	0.62	65	2.55	5.7	12.5					
F85	B	160	6.3	122	4.8	52	2.05	22	0.87	M20	30	1.18	M20	30	1.18	/	/	3/8" BSPP	2x3/8" BSPP	85	3.35	/	/	/	/	/	/	M6	17	0.66	140	5.51	16.5	36.3					

MODEL	2 bar								4 bar								6 bar										
	VIBRATION		FORCE		WORKING MOMENT		AIR CONSUMPTION		VIBRATION		FORCE		WORKING MOMENT		AIR CONSUMPTION		VIBRATION		FORCE		WORKING MOMENT		AIR CONSUMPTION				
	V/min	N	lb	kg*cm	in*lb	l/min	cfm	V/min	N	lb	kg*cm	in*lb	l/min	cfm	V/min	N	lb	kg*cm	in*lb	l/min	cfm	V/min	N	lb	kg*cm	in*lb	l/min
F8	2020	2.21	0.5	0.04	0.04	7	0.2	2950	5.07	1.1	0.04	0.04	19	0.7	3600	7.72	1.7	0.04	0.04	28	1						
F15	2280	10.80	2.4	0.16	0.15	20	0.7	2520	17.64	4.0	0.22	0.19	38	1.3	2820	22.05	5.0	0.22	0.19	67	2.4						
F15P	1920	9.70	2.2	0.21	0.18	20	0.7	2160	16.32	3.7	0.29	0.25	42	1.5	2340	19.40	4.4	0.29	0.25	80	2.8						
F18	2070	17.86	4.0	0.34	0.29	29	1	2520	26.46	5.9	0.36	0.31	55	1.9	3300	47.85	10.8	0.36	0.31	100	3.5						
F25	1860	19.85	4.5	0.46	0.4	32	1.1	2040	28.44	6.4	0.56	0.48	60	2.1	2220	33.96	7.6	0.56	0.48	105	3.7						
F40	1380	46.08	10.4	1.96	1.7	80	2.8	1560	74.53	16.7	2.49	2.15	190	6.7	1740	92.83	20.9	2.49	2.15	320	11.2						
F85	1680	220.94	49.7	6.36	5.5	240	8.4	1980	358.09	80.5	7.42	6.42	390	13.7	2280	474.96	106.7	7.42	6.42	580	20.4						

## F - LINEAR PNEUMATIC VIBRATORS - ADJUSTABLE CUSHIONED

APPLICATION Vibrating feeder - table and channel

POWDER Hygroscopic - dusty and granular

PROBLEM SOLVING Detaching and compacting

## FEATURES

DUTY CYCLE Continuous

WORKING PRESSURE From 2 bar to 6 bar (from 29 psi to 87 psi)

PNEUMATIC CIRCUIT Filter + flow control valve + lubrication + 3/2 ways valve

AIR SUPPLY QUALITY Class 5.4.4. | F15P - F18Q class 5.4.1

WORKING TEMPERATURE From -20°C to 200°C (from -4°F to 392°F) | F15P - from -20°C to 100°C (from -4°F to 212°F)

MAX NOISE LEVEL 80dB(a)




TECHNOLOGY Piston pneumatic cushioned

ATEX II 2D CT(X)  
II 2G CT(X)

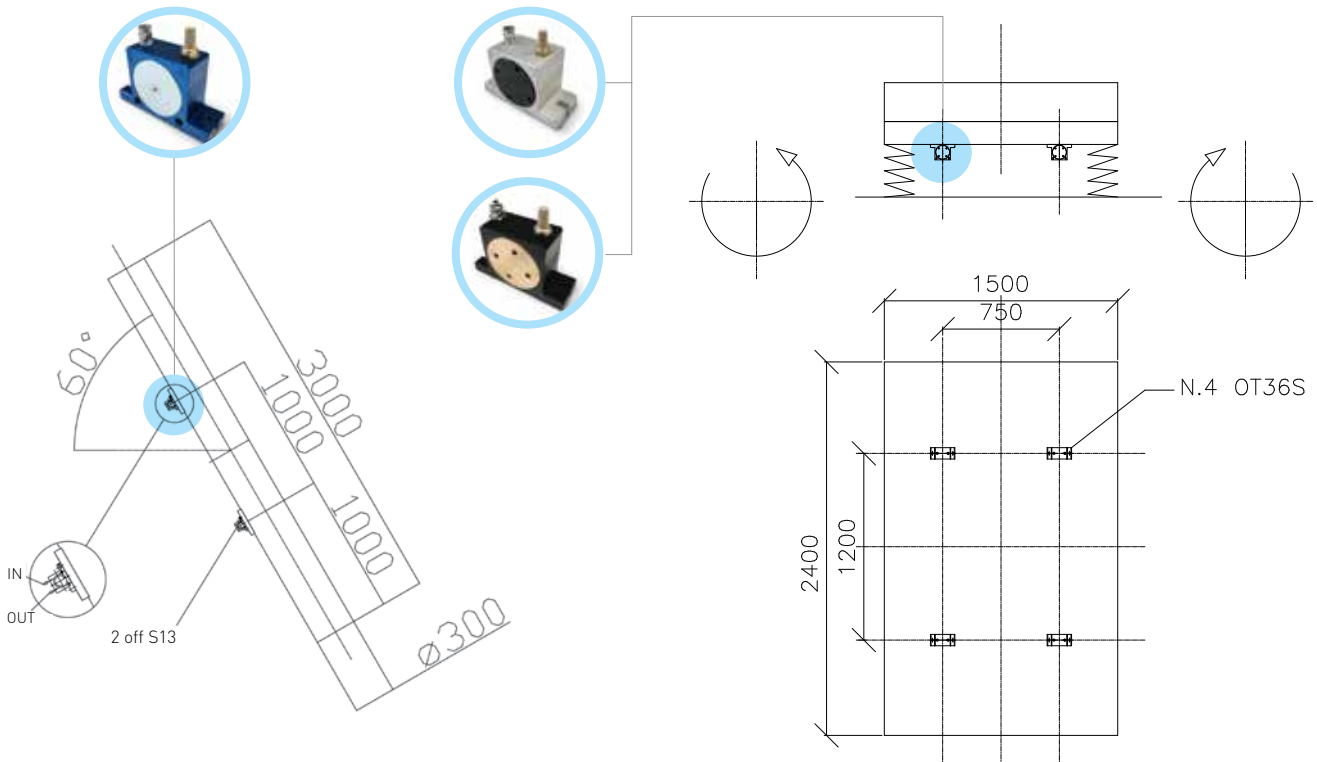
MATERIAL Grey cast iron body (powered painted)  
F15P: nylon body and aluminium cover  
F18: aluminium body (square shape)

# EXTERNAL APPLICATION

## ROTARY PNEUMATIC VIBRATORS

PRODUCT SERIES	APPLICATION	POWDER	FEATURES	BENEFITS
<b>BALL VIBRATORS</b> <b>S</b> 	Silos Hoppers Piping Chutes Compacting	<b>Dry powders.</b>  Granules Plastics Sand Ashes Cement Lime	Filter sleeve cleaning. Suitable for outdoor use. Resistant to oxidation. Atex II2GD T210°C.	Economical Low air consumption High frequency vibration
<b>ROLLER VIBRATORS</b> <b>OR</b> 	Silos Hoppers Piping Chutes Concrete compaction	<b>Hygroscopic powders.</b>  Cement Concrete Sand Foundry sand	Compact and robust design. Suitable for outdoor use. Resistant to oxidations. II2GD T210°C.	High centrifugal force Low air consumption High frequency vibration Suitable for high temperature
<b>TURBINE VIBRATORS</b> <b>OT</b> 	Silos Hoppers Piping Chutes	<b>Food powders.</b>  Sugar Bicarbonate Phosphate Sodium	Suitable for food and pharmaceutical applications. Resistant to oxidation. Atex II2GD T125°C.	High performance Silent Low air consumption

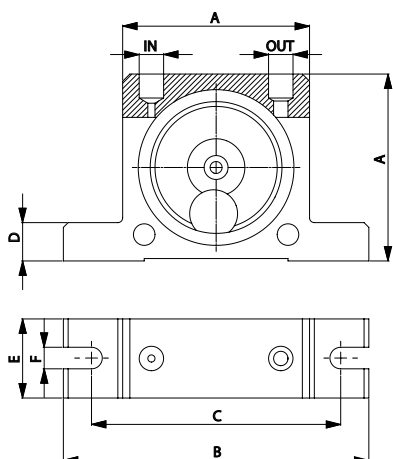
## APPLICATIONS







# S - Rotary pneumatic vibrators - Ball



DIMENSIONAL SPECIFICATIONS

MODEL	A		B		C		D		E		F		IN-OUT	WEIGHT	
	mm	inch	mm	inch	mm	inch	mm	inch	mm	inch	mm	inch		kg	lbs
S8	50	1.97	86	3.39	68	2.68	12	0.47	20	0.79	7	0.28	1/8" BSPP	0.13	0.29
S10	50	1.97	86	3.39	68	2.68	12	0.47	20	0.79	7	0.28	1/8" BSPP	0.13	0.29
S13	65	2.56	113	4.45	90	3.54	16	0.63	25	0.98	9	0.35	1/4" BSPP	0.26	0.57
S16	65	2.56	113	4.45	90	3.54	16	0.63	28	1.10	9	0.35	1/4" BSPP	0.30	0.66
S20	80	3.15	128	5.04	104	4.09	16	0.63	33	1.30	9	0.35	1/4" BSPP	0.53	1.17
S25	80	3.15	128	5.04	104	4.09	16	0.63	38	1.50	9	0.35	1/4" BSPP	0.63	1.39
S30	100	3.94	160	6.30	130	5.12	20	0.79	45	1.77	11	0.43	3/8" BSPP	1.13	2.49
S36	100	3.94	160	6.30	130	5.12	20	0.79	50	1.97	11	0.43	3/8" BSPP	1.34	2.95

MODEL	VIBRATION			F.C. MAX						AIR CONSUMPTION					
	Vpm			2bar = 29psi		4bar = 58psi		6bar = 87 psi		2bar = 29psi		4bar = 58psi		6bar = 87 psi	
	2bar = 29psi	4bar = 58psi	6bar = 87 psi	kg	lbs	kg	lbs	kg	lbs	l/min	CF/min	l/min	CF/min	l/min	CF/min
S8	25500	31000	35000	13	29	26	57	36	79	83	2.9	145	5.1	195	6.9
S10	22500	28000	34000	25	55	47	103	71	156	92	3.2	150	5.3	200	7.1
S13	15000	18500	22500	32	70	55	121	87	191	94	3.3	158	5.6	225	7.9
S16	13000	17000	19500	45	99	80	176	110	242	122	4.3	200	7.1	280	9.9
S20	10500	14500	16500	72	158	122	268	172	378	130	4.6	230	8.1	340	12.0
S25	9200	12200	14000	93	205	157	345	205	451	160	5.7	290	10.2	425	15.0
S30	7800	9700	12500	151	332	247	543	321	706	215	7.6	375	13.2	570	20.1
S36	7300	9000	10000	206	453	315	693	405	891	260	9.2	475	16.8	675	23.8

## S - ROTARY PNEUMATIC VIBRATORS - BALL

APPLICATION Hopper and silo - screen - vibrating table - chute

POWDER Dry and granular

PROBLEM SOLVING Friction reduction - separation

## FEATURES

DUTY CYCLE Continuous

WORKING PRESSURE From 2 bar to 6 bar (from 29 psi to 87 psi)

PNEUMATIC CIRCUIT Filter + flow control valve + lubrication + 3/2 ways valve

AIR SUPPLY QUALITY Class 5.4.4.

WORKING TEMPERATURE From -20°C to 200°C (from -4°F to 392°F)

MAX NOISE LEVEL 90 dB(a)

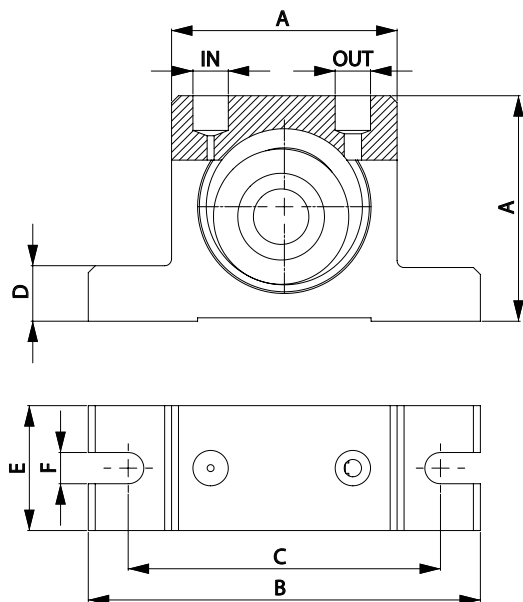
TECHNOLOGY Rotary vibration - high frequency

ATEX II 2D CT(X)  
II 2G CT(X)

MATERIAL Aluminium body and zinc plate cover



# OR - Rotary pneumatic vibrators - Roller



DIMENSIONAL SPECIFICATIONS

MODEL	A		B		C		D		E		F		IN-OUT	WEIGHT	
	mm	in	mm	in	mm	in	mm	in	mm	in	mm	in		kg	lbs
OR50	50	1.97	86	3.39	68	2.68	12	0.47	30	1.18	7	0.28	1/8" BSPP	0.37	0.81
OR65	65	2.56	113	4.45	90	3.54	16	0.63	36	1.42	9	0.35	1/4" BSPP	0.76	1.67
OR80	80	3.15	128	5.04	102	4.02	16	0.63	40	1.57	9	0.35	1/4" BSPP	1.27	2.79
OR100	100	3.94	160	6.30	130	5.12	20	0.79	52	2.05	11	0.43	1/4"-3/8" BSPP	2.60	5.72

MODEL	VIBRATION			F.C. MAX						AIR CONSUMPTION					
	Vpm			2bar = 29psi		4bar = 58psi		6bar =87psi		2bar = 29psi		4bar = 58psi		6bar =87psi	
	2bar = 29psi	4bar = 58psi	6bar =87psi	kg	lbs	kg	lbs	kg	lbs	l/min	CF/min	l/min	CF/min	l/min	CF/min
OR50	21000	25000	29500	188	413	281	619	355	780	78	2.8	144	5.1	204	7.2
OR65	19000	22000	26000	235	516	439	966	552	1215	100	3.5	198	7.0	296	10.5
OR80	14000	16000	21500	342	752	587	1292	624	1373	122	4.3	255	9.0	378	13.3
OR100	6750	9750	11000	289	637	604	1329	783	1722	132	4.7	284	10.0	412	14.5

## OR - ROTARY PNEUMATIC VIBRATORS - ROLLER

APPLICATION Hopper and silo - piping - chute - concrete compaction

POWDER Hygroscopic

PROBLEM SOLVING Friction reduction - compaction

## FEATURES

DUTY CYCLE Continuous

WORKING PRESSURE From 2 bar to 6 bar (from 29 psi to 87 psi)

PNEUMATIC CIRCUIT Filter + flow control valve + lubrication + 3/2 ways valve

AIR SUPPLY QUALITY Class 5.4.4.

WORKING TEMPERATURE From -20°C to 200°C (from -4°F to 392°F)

MAX NOISE LEVEL <90 dB(a)

TECHNOLOGY Roller vibration - high frequency and centrifugal force

ATEX II 2D CT(X)  
II 2G CT(X)

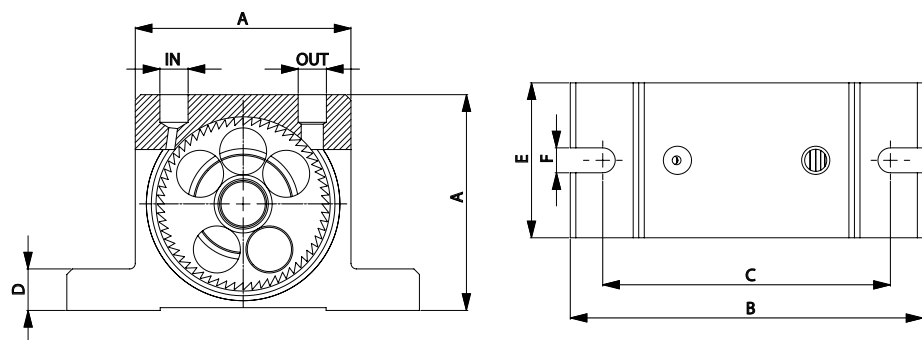
MATERIAL Aluminium body and brass cover

This information is furnished without warranty, representation, inducement or license of any kind. It is accurate to the best OLI knowledge or is obtained from sources believed to be accurate. OLI therefore assumes no legal responsibility.





# OT - Rotary pneumatic vibrators - Turbine



DIMENSIONAL SPECIFICATIONS															
MODEL	A		B		C		D		E		F		IN-OUT	WEIGHT	
	mm	inch	mm	inch	mm	inch	mm	inch	mm	inch	mm	inch		kg	lbs
OT8	50	1.97	86	3.39	68	2.68	12	0.47	33	1.30	7	0.28	1/8" BSPP	0.25	0.55
OT10														0.26	0.56
OT10S														0.26	0.58
OT13	65	2.56	113	4.45	90	3.54	16	0.63	42	1.65	9	0.35	1/4" BSPP	0.57	1.24
OT16														0.58	1.28
OT16S														0.61	1.35
OT20	80	3.15	128	5.04	104	4.09	16	0.63	56	2.20	9	0.35	1/4" BSPP	1.09	2.40
OT25														1.12	2.46
OT25S														1.20	2.64
OT30	100	3.94	160	6.30	130	5.12	20	0.79	73	2.87	11	0.43	3/8" BSPP	2.20	4.84
OT36														2.30	5.06
OT36S														2.53	5.57

MODEL	VIBRATION			F.C. MAX						AIR CONSUMPTION					
	Vpm			2bar = 29psi		4bar = 58psi		6bar = 87psi		2bar = 29psi		4bar = 58psi		6bar = 87psi	
	2bar = 29psi	4bar = 58psi	6bar = 87psi	kg	lbs	kg	lbs	kg	lbs	l/min	CF/min	l/min	CF/min	l/min	CF/min
OT8	34000	38000	42000	110	242	205	451	292	641	45	1.6	81	2.9	110	3.9
OT10	26000	33000	38000	105	231	171	377	252	554	45	1.6	81	2.9	110	3.9
OT10S	17200	23400	26000	72	159	147	323	187	410	45	1.6	81	2.9	110	3.9
OT13	24500	28500	31000	202	444	263	579	300	659	122	4.3	204	7.2	285	10.1
OT16	18000	20000	21000	194	427	239	527	264	581	122	4.3	204	7.2	285	10.1
OT16S	11500	15000	17500	129	285	196	431	234	516	122	4.3	204	7.2	285	10.1
OT20	14500	19000	23000	251	552	404	888	526	1157	184	6.5	318	11.2	452	16.0
OT25	13200	15500	17000	244	537	336	740	508	1117	184	6.5	318	11.2	452	16.0
OT25S	9000	11000	13500	214	471	335	738	483	1063	184	6.5	318	11.2	452	16.0
OT30	11000	12500	14500	351	771	721	1586	781	1718	322	11.4	542	19.1	749	26.5
OT36	8500	11500	12000	341	751	698	1536	749	1648	322	11.4	542	19.1	749	26.5
OT36S	6000	7000	8500	406	893	706	1554	754	1660	322	11.4	542	19.1	749	26.5

## OT - ROTARY PNEUMATIC VIBRATORS - TURBINE

APPLICATION	Hopper and silo - screen - vibrating table - chute - concrete consolidation
POWDER	Dry and granular [food] - concrete
PROBLEM SOLVING	Friction reduction - separation - consolidation

## FEATURES

DUTY CYCLE	Continuous
WORKING PRESSURE	From 2 bar to 6 bar (from 29 psi to 87 psi)
PNEUMATIC CIRCUIT	Filter + flow control valve + 3/2 ways valve
AIR SUPPLY QUALITY	Class 5.4.1.
WORKING TEMPERATURE	From -20°C to 120°C (from -4°F to 248°F)
MAX NOISE LEVEL	<90 dB(a)
TECHNOLOGY	Turbine vibration - high frequency and centrifugal force
ATEX	II 2D CT(X) II 2G CT(X)
MATERIAL	Aluminium body

# EXTERNAL APPLICATION

## ELECTRIC VIBRATORS

### PRODUCT SERIES

2 POLES MICRO  
MVE-MICRO



### APPLICATION

Small hoppers  
Micro-screens  
Chutes  
Vibrating feeders,  
tables and channels

### POWDER

**Fine, dry powder.**  
  
Plastics  
Sugar  
Bicarbonate  
Seeds

### FEATURES

Compact, uni-body,  
heavy-duty design.  
Supplied with  
stainless steel covers  
in standard version.  
Atex II2D T100°C.

### BENEFITS

Economical  
Easy to install  
Single phase cable  
with built-in capacitor  
Adjustable force

2 POLES  
MVE



Silos  
Hoppers  
Dispensers  
Agitators  
Mixers  
Filter cleaning  
Vibrating feeders  
and tables

### Fine and dry powders, granules.

Cement  
Flour  
Grit  
Sugar

Suitable for indoor  
and outdoor use.  
Silos and hoppers  
of any material  
and capacity from  
200 to 10,000 kg.  
Atex II2D T100°C.

Economical  
Wide range  
Special windings  
for different  
geographical areas  
Adjustable force

DIRECT CURRENT  
MVE-DC



Automotive  
Hoppers  
Salt and manure  
spreaders  
Dump trucks  
Concrete pump  
grids

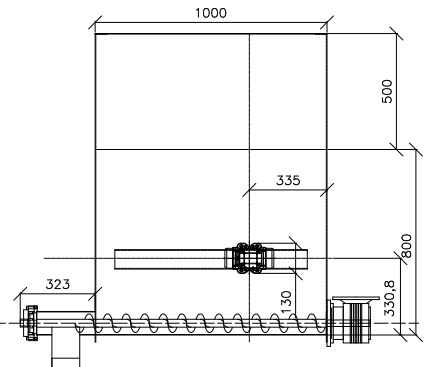
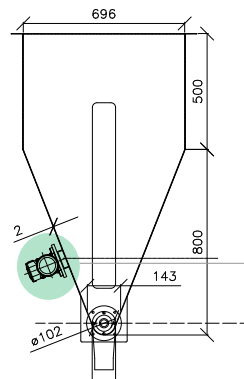
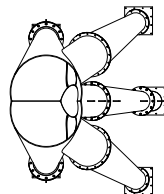
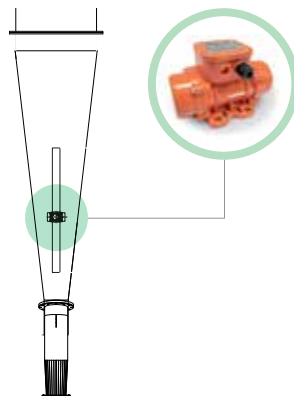
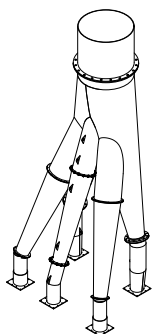
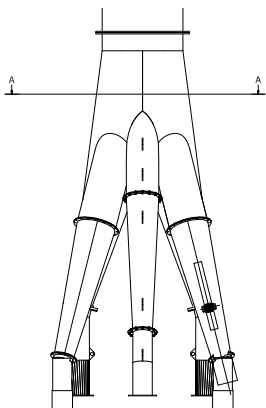
### Granular powders.

Concrete  
Fertilizers  
Corn  
Soy  
Rice  
Seeds  
Salt  
Sand

Stainless steel  
covers.  
DC Motor 3,000  
RPM 12V-24V.  
Power from 80  
to 160 W.  
Resistant to oxidation.

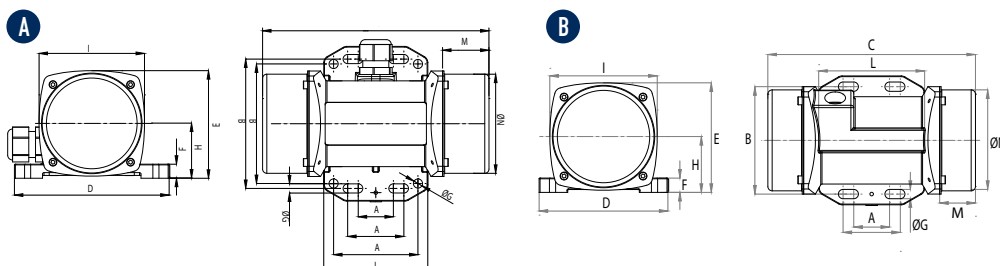
Economical  
Robust  
Safe  
Terminal box connection  
sealed (option)  
Adjustable force

## APPLICATIONS





# MVE-MICRO - 2 poles electric vibrators



## DIMENSIONAL SPECIFICATIONS

MODEL		DRAW.	C		M		A		B		Ø G		HOLES	D		E		F		H		I		L		N		SCREW	
50 / 60 Hz	60 Hz USA		mm	in	mm	in	mm	in	mm	in	mm	in	n°	mm	in	mm	in	mm	in	mm	in	mm	in	mm	in	mm	in	Metric	in
MICRO 3M	MVE 0003	A	145	5.7	25	1.0	25-40 60	1-1.6 2.4	92 85	3.6 3.3	6.5 6.5	0.3 0.3	4	110	4.3	76.5	3.0	10	0.4	39	1.5	75	3.0	74	2.9	70.5	2.8	M5	3/16"
MICRO 6M	MVE 0006	B	145	5.7	25	1.0	25-40 60	1-1.6 2.4	92 85	3.6 3.3	6.5 6.5	0.3 0.3	4	90	3.5	76.5	3.0	10	0.4	39	1.5	75	3.0	74	2.9	70.5	2.8	M5	3/16"
MICRO 21, 21M	MVE 0021	A	145	5.7	25	1.0	25-40	1-1.6	92	3.6	6.5	0.3	4	110	4.3	76.5	3.0	10	0.4	39	1.5	75	3.0	74	2.9	70.5	2.8	M5	3/16"
MICRO 41, 41M	MVE 0041						60	2.4	85	3.3	6.5	0.3																	
MICRO 41, 41M	MVE 0041	A	161	6.3	33	1.3	25-40 60	1-1.6 2.4	92 85	3.6 3.3	6.5 6.5	0.3 0.3	4	110	4.3	76.5	3.0	10	0.4	39	1.5	75	3.0	74	2.9	70.5	2.8	M5	3/16"

## MVE-MICRO THREE PHASE - 3000 RPM 400V 50HZ / 3600 RPM 460V / 60HZ

MODEL			ELECTRIC FEATURES																			
			WORKING MOMENT				CENTRIFUGAL FORCE				WEIGHT		POWER				CURRENT			COS PHI		
			kg*cm		in*lb		kg		lb				kW		Hp		A max					
50 Hz	60 Hz	60 Hz - USA	50Hz	60Hz	50Hz	60Hz	50Hz	60Hz	50Hz	60Hz	kg	lb	50Hz	60Hz	50Hz	60Hz	230V	400V	460V	230V	400V	460V
MICRO 21	MICRO 21/36	MVE.0021.36.460	0.40	0.40	0.35	0.35	20	29	44	64	2	4.4	0.04	0.04	0.05	0.05	0.16	0.12	0.12	0.45	0.45	0.42
MICRO 41	MICRO 41/36	MVE.0041.36.460	0.90	0.90	0.78	0.78	45	65	99	143	2.4	5.3	0.06	0.06	0.08	0.08	0.30	0.18	0.18	0.44	0.44	0.40

## MVE-MICRO SINGLE PHASE - 3000 RPM 230V 50HZ / 3600 RPM 115V 60HZ

MODEL			ELECTRICAL FEATURES																			
			WORKING MOMENT				CENTRIFUGAL FORCE				WEIGHT		POWER				CURRENT			COS PHI		
			kg*cm		in*lb		kg		lb				Kw		Hp		A max					
50 Hz	60 Hz	60 Hz - USA	50Hz	60Hz	50Hz	60Hz	50Hz	60Hz	50Hz	60Hz	kg	lb	50Hz	60Hz	50Hz	60Hz	230V	115V	230V	115V		
MICRO 3M	MICRO 3/36M	MVE.0003.36.115	0.08	0.08	0.07	0.07	4	6	9	13	1.6	3.5	0.03	0.04	0.04	0.05	0.30	0.80	0.43	0.43		
MICRO 6M	MICRO 6/36M	MVE.0006.36.115	0.12	0.12	0.10	0.10	6	9	13	20	1.6	3.5	0.03	0.04	0.04	0.05	0.30	0.80	0.43	0.43		
MICRO 21M	MICRO 21/36M	MVE.0021.36.115	0.40	0.40	0.35	0.35	20	29	44	64	2	4.4	0.04	0.04	0.05	0.05	0.20	0.80	0.80	0.80		
MICRO 41M	MICRO 41/36M	MVE.0041.36.115	0.90	0.90	0.78	0.78	45	65	99	143	2.4	5.3	0.05	0.07	0.07	0.09	0.25	0.80	0.80	0.80		

## MVE-MICRO - 2 POLES ELECTRIC VIBRATORS - THREE PHASE OR SINGLE PHASE

APPLICATION Small hopper - micro screen - chute - vibrating feeder table and channels

POWDER Fine - dry

PROBLEM SOLVING Bridge and rat-holing

### FEATURES

DUTY CYCLE Continuous - S1

ENVIRONMENT TEMPERATURE From -20°C to 40°C (rom -4°F to 104°F)

MAX NOISE LEVEL 76 dB(A)

ATEX II 3 D Ex tD A22 Tx IP 66

MATERIAL Body aluminium - stainless steel cover

CAPACITOR MICRO 21 - 115v µF 4, 220v 50/60Hz µF1,5 | MICRO 41 - 115v µF 4, 220v 50/60Hz µF3

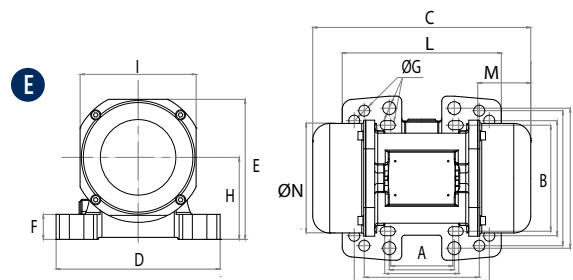
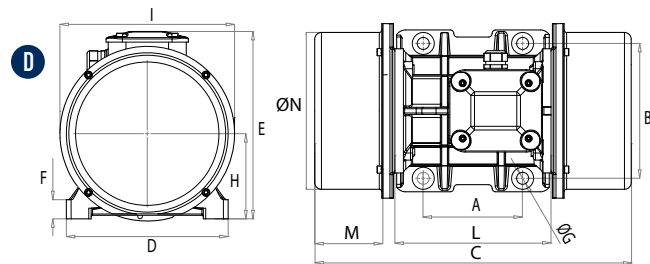
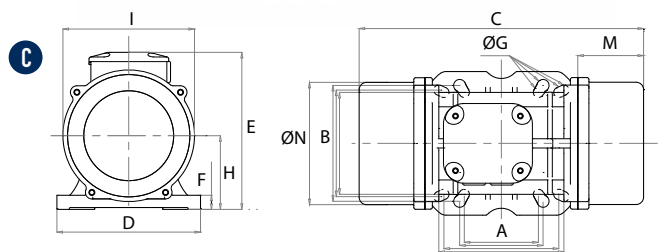
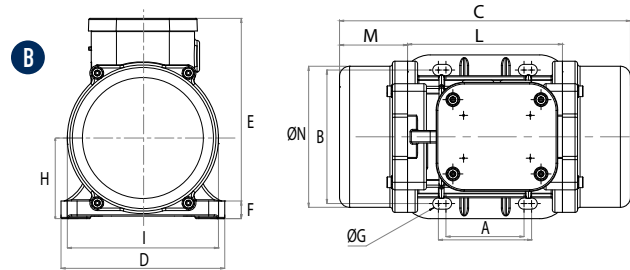
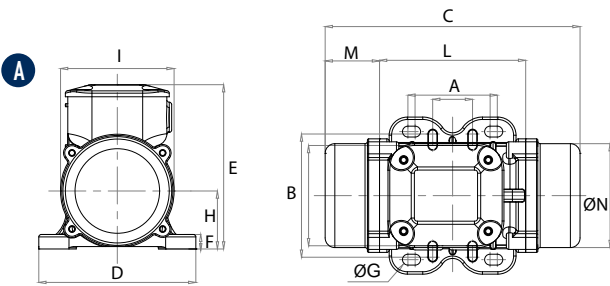
### OPTIONS

ATEX II 2 D Ex t IIIC Tx Db IP 66

CUSTOMISED CABLE Available



# MVE - 2 poles electric vibrators



## DIMENSIONAL SPECIFICATIONS

THREE PHASE		SINGLE PHASE	DRAWING	SIZE	C		M		A		B		ØG		HOLES	D		E		F		H		I		L		N		WEIGHT			
50 / 60 Hz	U.S. 60 Hz	50 / 60 Hz			mm	in	mm	in	mm	in	mm	in	mm	in		mm	in	mm	in	mm	in	mm	in	mm	in	mm	in	mm	in	mm	in	kg	lb
MVE 60/3	MVE 160/2	MVE 60/3M	A	10	211	8.31	45	1.77	62-74	2.44-2.91	106	4.17	9	0.35	4	130	5.12	136	5.35	12	0.47	48	1.89	94	3.70	121	4.76	85	3.35	4.2	9.3		
MVE 100/3	MVE 220/2	MVE 100/3M							33	1.30	83-102	3.27-4.02	7	0.28																4.6	10.1		
MVE 200/3	MVE 440/2	MVE 200/3M	B	20	231	9.09	54	2.13	62-74	2.44-2.91	106	4.17	9	0.35	4	131	5.16	159	6.26	15	0.59	64	2.52	121	4.76	123	4.84	112	4.41	7.0	15.4		
MVE 202/3	MVE 444/2	MVE 202/3M	E	23	218	8.58	53	2.09	62-74	2.44-2.91	106	4.17	9	0.35	4	164	6.46	140	5.51	25	0.98	82	3.23	116	4.57	159	6.26	110	4.33	7.2	15.9		
									65	2.56	140	5.51	13	0.51																			
									115	4.53	135	5.31	11	0.43																			
MVE 300/3	MVE 690/2	MVE 300/3M	C	30	253	9.96	45	1.77	80	3.15	110	4.33	11	0.43	4	154	6.06	175	6.89	15	0.59	79	3.11	142	5.59	163	6.42	131	5.16	9.8	21.6		
									90	3.54	125	4.92	13	0.51																			
									124	4.88	110	4.33	11	0.43																			
MVE 400/3	MVE 890/2	-	D	50	321	12.64	58	2.28	135	5.31	115	4.53	11	0.43	4	208	8.19	210	8.27	22	0.87	94	3.70	180	7.09	205	8.07	170	6.69	20.6	45.4		
MVE 500/3	MVE 1200/2	-							105	4.13	140	5.51	13	0.51																		15.8	34.8
MVE 700/3	MVE 1700/2	-							16.5	36.4																							

This information is furnished without warranty, representation, inducement or license of any kind. It is accurate to the best OLI knowledge or is obtained from sources believed to be accurate. OLI therefore assumes no legal responsibility.

# MVE THREE PHASE

MODEL		ELECTRICAL FEATURES																				
		WORKING MOMENT				CENTRIFUGAL FORCE				POWER				CURRENT		COSΦ		IA/IN		CLASSII DIV.2	II 2D	CABLE GLAND
		kg*cm		in*lb		kg		lb		kW		hp		A max (Y)								
50/60 Hz	U.S. 60 Hz	50Hz	60Hz	50Hz	60Hz	50Hz	60Hz	50Hz	60Hz	50Hz	60Hz	50Hz	60 Hz	400V	460V	50Hz	60Hz	50Hz	60Hz	Temp. Class	Temp. Class	Class Temp.
MVE 60/3	MVE 160/2	1.3	0.9	1.1	0.9	66	71	145.5	156.5	0.08	0.09	0.11	0.12	0.16	0.18	0.74	0.82	3	3	T4	100	M16 80°C
MVE 100/3	MVE 220/2	1.9	1.3	1.7	1.1	98	95	216	209.4	0.1	0.11	0.13	0.15	0.19	0.18	0.76	0.85	3	3	T4	100	M20 80°C
MVE 200/3	MVE 440/2	3.7	2.6	3.2	2.3	187	189	412.3	416.7	0.18	0.21	0.24	0.28	0.35	0.35	0.78	0.87	3.3	3.30	T4	100	
MVE 202/3	MVE 444/2	3.7	2.6	3.2	2.3	187	189	412.3	416.7	0.18	0.21	0.24	0.28	0.35	0.35	0.78	0.87	3.3	3.30	T4	100	
MVE 300/3	MVE 690/2	6.4	4.5	5.5	3.9	321	323	708	712.1	0.27	0.28	0.36	0.38	0.52	0.45	0.84	0.89	3.60	3.50	T4	100	
MVE 400/3	MVE 890/2	7.9	5.7	6.9	4.9	407	411	897	906.1	0.30	0.36	0.40	0.48	0.58	0.60	0.88	0.88	3.50	3.50	T4	100	
MVE 500/3	MVE 1200/2	10.3	7.4	8.9	6.4	530	534	1168.4	1177.3	0.50	0.58	0.67	0.78	0.96	0.97	0.84	0.87	4.00	4.20	T4	100	
MVE 700/3	MVE 1700/2	14.9	10.6	12.9	9.2	758	765	1671.1	1686.5	0.66	0.75	0.89	1.01	1.25	1.24	0.83	0.88	4.30	5.00	T4	100	
MVE 800/3	MVE 1800/2	15.7	11.1	13.6	9.6	794	800	1750.5	1763.7	0.75	0.90	1.01	1.21	1.45	1.50	0.79	0.84	3.80	3.80	T4	100	

# MVE SINGLE PHASE

MODEL			ELECTRICAL FEATURES																				
			WORKING MOMENT				CENTRIFUGAL FORCE				POWER				CURRENT			CAPACITOR			CLASSII DIV.2	II 2D	CABLE GLAND
			kg*cm		in*lb		kg		lb		kW		hp		A max			µF					
50 Hz	60 Hz	60 Hz U.S. Market	50Hz	60Hz	50Hz	60Hz	50Hz	60Hz	50Hz	60Hz	50Hz	60Hz	50Hz	60Hz	230V	220V	115V	220V	220V	115V	Temp. Class	Temp. Class	Class
MVE 60/3M	MVE 60/36M	MVE 160/2M	1.3	1.0	1.1	0.9	66	71	145.5	156.5	0.08	0.09	0.11	0.12	0.43	0.43	1.03	3	3	6.3	T4	100	M16 80°C
MVE 100/3M	MVE 100/36M	MVE 220/2M	1.9	1.3	1.7	1.1	98	95	216.1	209.4	0.1	0.11	0.13	0.15	0.54	0.54	1.3	4	4	8	T4	100	M20 80°C
MVE 200/3M	MVE 200/36M	MVE 440/2M	3.7	2.6	3.2	2.3	187	189	412.3	416.7	0.18	0.21	0.24	0.28	1.14	1.14	2.62	8	8	16	T4	100	
MVE 202/3M	MVE 202/36M	MVE 444/2M	3.7	2.6	3.2	2.3	187	189	412.3	416.7	0.18	0.21	0.24	0.28	1.14	1.14	2.62	8	8	16	T4	100	
MVE 300/3M	MVE 300/36M	MVE 690/2M	6.4	4.4	5.5	3.9	321	323	707.7	712.1	0.27	0.28	0.36	0.38	1.58	1.58	3.43	12.5	12.5	25	T4	100	80°C

## MVE - 2 POLES ELECTRIC VIBRATORS - THREE PHASE OR SINGLE PHASE

APPLICATION	Hopper and silo - feeder - screen
POWDER	Fine - dry granular
PROBLEM SOLVING	Bridge and rat-holing

## FEATURES

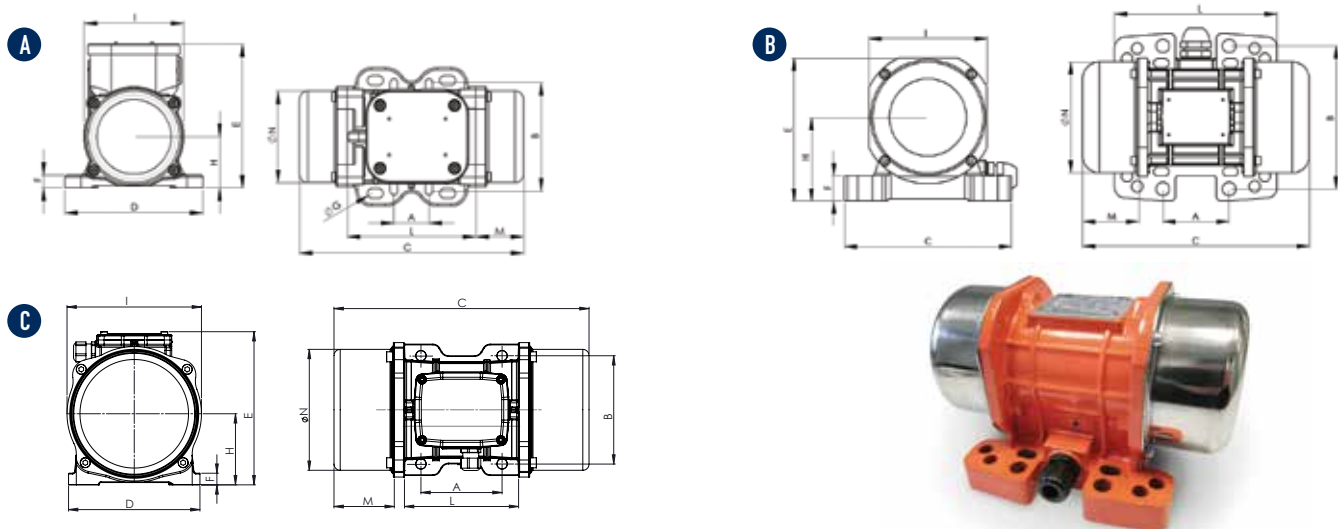
DUTY CYCLE	Continuous - S1
FREQUENCY RANGE	From 20Hz to 60Hz [with inverter]
ENVIRONMENT TEMPERATURE	From -20°C to 40°C (from -4°F to 104°F)
MAX NOISE LEVEL	76 dB(a)
ATEX	II 3 D Ex tc IIIC Tx IP66
MATERIAL	Aluminium body; aluminium (powder painted) cover

## OPTIONS

CAPACITOR	Available
ATEX	II 2 D Ex tb IIIC Tc Db IP66
CUSTOMISED CABLE	Available



# MVE-DC - Direct current electric vibrators



DIMENSIONAL SPECIFICATIONS

MODEL	DRAWING	SIZE	C		M		A		B		Ø G		HOLES n°	D		E		F		H		I		L		N	
			mm	in	mm	in	mm	in	mm	in	mm	in		mm	in	mm	in	mm	in	mm	in	mm	in	mm	in	mm	in
			50Hz	50Hz	50Hz	50Hz	mm	in	mm	in	mm	in		mm	in	mm	in	mm	in	mm	in	mm	in	mm	in	mm	in
MVE 50 DC 24	A	10	211	8.31	45	1.77	62-74	2.44-2.91	106	4.17	9	0.35	4	130	5.12	136	5.35	12	0.47	48	1.89	94	3.70	121	4.76	85	3.35
MVE 50 DC 12			33	1.30	83-102	3.27-4.02	7	0.28																			
MVE 120 DC 24	B	23	218	8.58	53	2.09	62-74	2.44-2.91	106	4.17	9	0.35	4	164	6.46	140	5.51	25	0.98	82	3.23	116	4.57	159	6.26	110	4.33
MVE 120 DC 12							65	2.56	140	5.51	13	0.51															
MVE 202 DC 24							115	4.53	135	5.31	11	0.43															
MVE 202 DC 12							135	5.31	115	4.53	11	0.43															
MVE 500 DC 24	C	40	330	12.99	78	3.07	105	4.13	140	5.51	13	0.51	4	170	6.69	195.5	7.70	15	0.59	92	3.62	174	6.85	174	6.85	160	6.30
MVE 1500 DC 24	C	50	324	12.76	63.5	2.50	120	4.72	170	6.69	18	0.71	4	208	8.19	209.5	8.25	18	0.71	96	3.78	184	7.24	198	7.80	169	6.65

ELECTRICAL SPECIFICATIONS

MODEL	RPM	WORKING MOMENT		CENTRIFUGAL FORCE		WEIGHT		POWER		MAX CURRENT	Ex II 3D	CABLE TYPE	CABLE GLAND
		kg*cm	in-lb	kg	lb	kg	lb	kW	Hp	A			
		Temp. Class [°C]	Class Temp	Class Temp									
MVE 50 DC 24	3000	1.02	0.89	50	110	4.4	9.7	0.08	0.11	3.3	100	2Gx1.5 90°C	M16 80°C
MVE 50 DC 12	3000	1.02	0.89	50	110	4.4	9.7	0.08	0.11	6.6			
MVE 120 DC 24	3000	2.14	1.86	117	258	7.2	15.9	0.11	0.15	4.8	100	2Gx1.5 90°C	M20 80°C
MVE 120 DC 12	3000	2.14	1.86	117	258			0.11	0.15	9.6			
MVE 202 DC 24	3000	4.17	3.62	200	441	0.16	0.21	6.7					
MVE 202 DC 12	3000	4.17	3.62	200	441	0.16	0.21	13.3					
MVE 500 DC 24	3000	10.40	9.03	530	1168.4	14.4	31.7	0.26	0.35	11.00	100	2Gx1.5 90°C	M20 80°C
MVE 1500 DC 24	3000	22.40	19.44	1616	3562.6	21.8	48.1	0.52	0.70	21.50	100	2Gx1.5 90°C	M20 80°C

## MVE-DC - DIRECT CURRENT ELECTRIC VIBRATORS

**APPLICATION** Dump truck - Concrete pump - automotive hopper - salt spreader - dump trailer

**POWDER** Granular - Concrete

**PROBLEM SOLVING** Bridge and rat-holing

## FEATURES

**DUTY CYCLE** Continuous - S1

**ENVIRONMENT TEMPERATURE** From -20°C to 40°C (from -4°F to 104°F)

**MAX NOISE LEVEL** 76 dB(a)

**ATEX** II 3 D EX TD A22 TX IP 66

**MATERIAL** Body aluminium - stainless steel /aluminium (powder painted) cover

## OPTIONS

**CUSTOMISED CABLE** Available

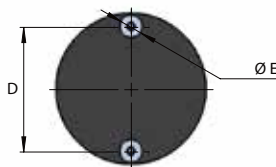
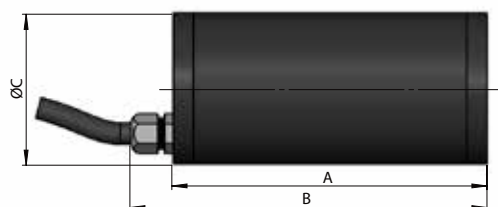
This information is furnished without warranty, representation, inducement or license of any kind. It is accurate to the best OLI knowledge or is obtained from sources believed to be accurate. OLI therefore assumes no legal responsibility.







# MVE-DC - Direct current electric vibrators - For industrial sweepers



DIMENSIONAL SPECIFICATIONS

MODEL	A		B		Ø C		D		Ø E	
	mm	in	mm	in	mm	in	mm	in	mm	in
MVE60DC 12	167	6.6	189	7.4	80	3.1	66	2.6	12	0.5
MVE60DC 24										
MVE60DC 36										
MVE100DC 12	207	8.1	230	9.1	80	3.1	66	2.6	12	0.5
MVE100DC 24										
MVE100DC 36										

ELECTRICAL SPECIFICATIONS

MODEL	rpm	WORKING MOMENT		CENTRIFUGAL FORCE		WEIGHT		INPUT POWER		MAX CURRENT
		kg*cm	in-lb	kg	lb	kg	lb	kW	Hp	A
MVE60DC 12	3000	1.19	1.04	60	132.3	3.8	8.4	0.10	0.13	12.7
MVE60DC 24	3000	1.19	1.04	60	132.3	3.8	8.4	0.10	0.13	6.4
MVE60DC 36	3000	1.19	1.04	60	132.3	3.8	8.4	0.10	0.13	4
MVE100DC 12	3000	1.99	1.72	100	220.5	4.8	10.6	0.11	0.15	14
MVE100DC 24	3000	1.99	1.72	100	220.5	4.8	10.6	0.11	0.15	7
MVE100DC 36	3000	1.99	1.72	100	220.5	4.8	10.6	0.11	0.15	4.5

## MVE-DC - DIRECT CURRENT ELECTRIC VIBRATORS FOR INDUSTRIAL SWEEPERS

APPLICATION Industrial sweepers

PROBLEM SOLVED Cleaning of dirt collection hopper

### FEATURES

DUTY CYCLE Continuous - S1

STANDARD CABLE 1m

ENVIRONMENT TEMPERATURE From -20°C to 40°C (from -4°F to 104°F)

### OPTIONS

CUSTOMISED CABLE Available

# EXTERNAL APPLICATION

# HYDRAULIC VIBRATORS

### PRODUCT SERIES

HYDRAULIC VIBRATOR  
MVO 850



### APPLICATION

Dump trucks  
Agricultural equipment  
Digging buckets  
Pipeline padder equipment  
Construction equipment

### POWDER

**Hygroscopic, wet, sticky and granular powder.**

Clay  
Fertilizer  
Manure  
Sludge  
Aggregates

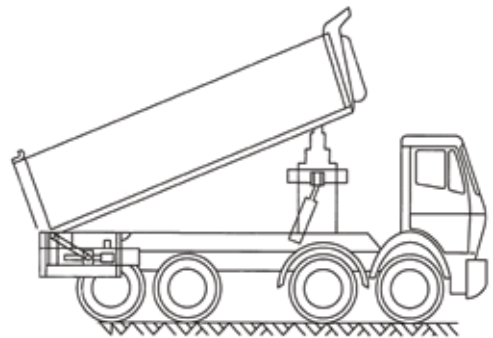
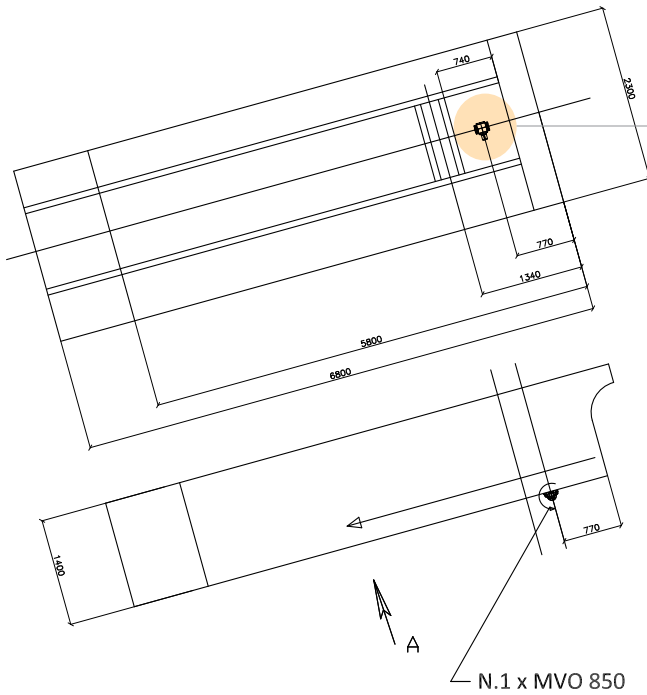
### FEATURES

Continuous duty.  
Working pressure from 15 to 300 bar (from 217 to 4.350 PSI).  
Working temperature from -20 to 60°C (from -4 to 140 °F).  
Max. noise level 80 dB(A).  
Speed from 3.000 to 6.000 rpm.

### BENEFITS

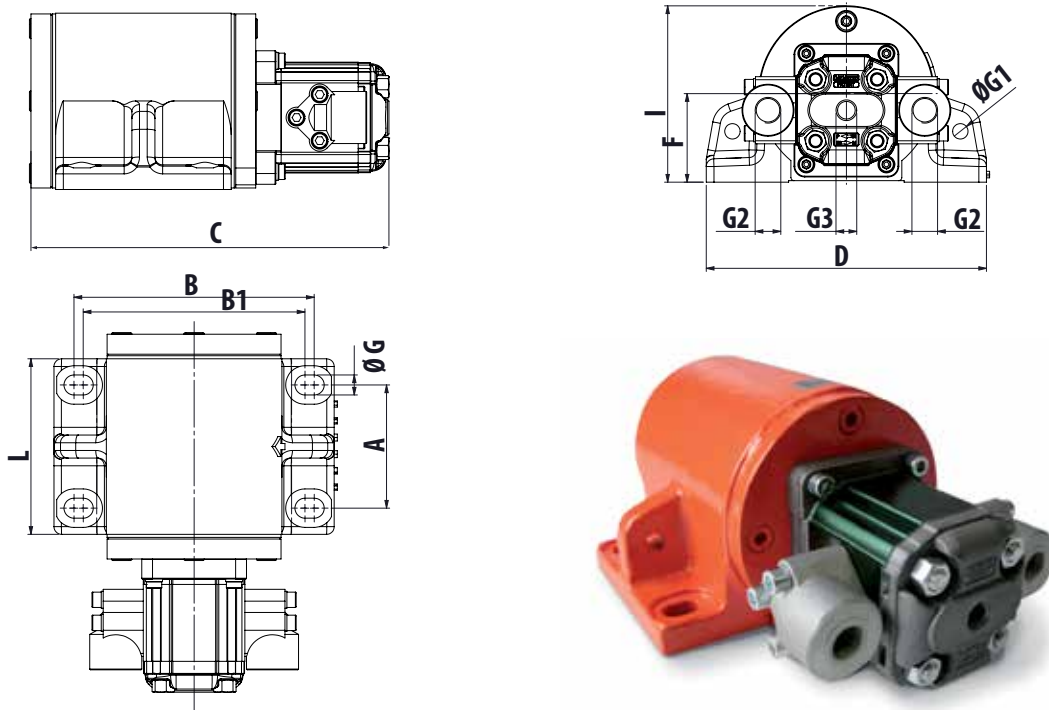
Robust  
Safe  
Easy to install  
Compact design  
High Force

## APPLICATIONS





# MVO - Hydraulic vibrators



DIMENSIONAL SPECIFICATIONS

A		B		B1		C		D		L		F		G		G1		G2		G3		I		Weight	
mm	in	mm	in	mm	in	mm	in	mm	in	mm	in	mm	in	mm	in	mm	in	BSPP	BSPP	mm	in	kg	lb		
80	3.15	156	6.14	144	5.67	232.5	9.2	182	7.16	114.5	4.5	57.5	2.3	13	0.5	10	0.4	3.8"	1/4"	114.5	4.50	11	24		

MECHANICAL FEATURES

MODEL	CENTRIFUGAL FORCE				WORKING MOMENT		STATIC MOMENT		OPERATING PRESS.		MAX PRESSURE	
	3000 rpm		6000 rpm		kg*cm	in*lb	kg*cm	in*lb	bar		bar	
	kg	lb	kg	lb					3000 rpm	6000 rpm		
	MVO 850	208	459	830	1830	4.12	3.57	2.06	1.78	70		120

BEARING LIFE

rpm	CENTRIFUGAL FORCE		BEARING LIFE
	kg	lb	hrs
3000	208	459	1,375.922
6000	459	1830	6,826

## MVO - HYDRAULIC VIBRATORS

**APPLICATION** Dump trailer - agriculture machine - digging bucket

**POWDER** Hygroscopic - wet sticky and granular

**PROBLEM SOLVING** Detaching

## FEATURES

**DUTY CYCLE** Continuous - S1

**WORKING PRESSURE** From 15 bar to 300 bar (from 217 psi to 4.350 psi)

**HYDRAULIC CIRCUIT** Flow control valve + filter (mesh 30-60 micron)

**ENGINE SIZE** 3.12 Cm<sup>3</sup>/round

**WORKING TEMPERATURE** From -20°C to 60°C (from -4°F to 140°F)

**OIL VISCOSITY** From 20 mm<sup>2</sup>/sec to 100 mm<sup>2</sup>/sec

**OIL TYPE** HLP HV (D in 51524) hydraulic mineral oil

**FLOW RATE** 2,24 l/min (700 rpm) - 9,6 l/min (3.000 rpm) - 19,2 l/min (6.000 rpm)

**MAX NOISE LEVEL** 80dB(a)

**MOTOR TYPE** XV-1M/3.2

**TECHNOLOGY** Hydraulic rotary vibrator

**MATERIAL** Grey cast iron body (RAL 2004 powder painted)

# WHEN YOU NEED IT, WHERE YOU NEED IT.

## THE WORLDWIDE LEADER IN VIBRATION TECHNOLOGY

[WWW.OLIVIBRA.COM](http://WWW.OLIVIBRA.COM)



### OLI Headquarters

Via Canalazzo, 35  
41036 Medolla (MO) - Italy

+39 0535 41 06 11

info@olivibra.com

### OLI worldwide

OLI Australia

OLI Benelux

OLI Brazil

OLI China

OLI France

OLI Germany

OLI India

OLI Italy

OLI Malta

OLI Middle East

OLI Nordic

OLI Romania

OLI Russia

OLI South Africa

OLI Spain

OLI Thailand

OLI Turkey

OLI UK

OLI USA