

Drive Coupling

HC Series



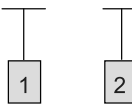
Features and Handling

- Drive Couplings are made of steel reinforce Nylon sleeve with two steel drive hubs. The crowned teeth form gears permit axial and angular misalignment.
- Easy to assemble and no maintenance or lubrication needed.
- After years of experience, our drive coupling has been developed to withstand higher torque than other coupling in the market.



Ordering Code

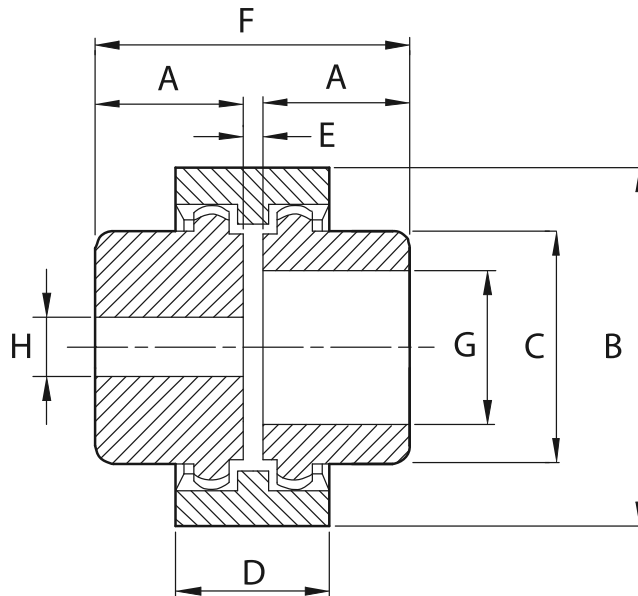
HC - 28



1 Model : HC

2 Bore Size (mm)
28, 42, 55

Specification and Installation Dimensions mm (inch)



Model	Maximum Speed rpm	Maximum Power kW (hp)	Dimensions mm (inch)									Weight kg (lb)
			A	B	C	D	E	F	G		H	
									Max Bore	Min Bore		
HC-28	5000	3.7 (5)	40.0 (1.57)	67.5 (2.65)	44 (1.73)	37 (1.45)	4 (0.16)	84 (3.31)	28 (1.100)	10 (0.39)	10 (0.39)	1 (2.2)
HC-42	5000	7.5 (10)	40.0 (1.57)	88 (3.46)	60 (2.36)	50 (1.97)	4 (0.16)	84 (3.31)	42 (1.65)	10 (0.39)	10 (0.39)	1.8 (4.0)
HC-55	4000	14.9 (20)	57.6 (2.27)	122 (4.80)	80 (3.15)	64 (2.52)	4 (0.16)	124 (4.88)	55 (2.17)	15.9 (0.62)	14 (0.55)	5 (11.0)