

Universal joint / Cardan shaft



STOCK

Universal joint / Cardan shaft A power transmission device that efficiently transfers rotational motion between misaligned or angled shafts. Ideal for industrial machinery and drive systems, it offers high torque capacity, reduces vibration, and ensures smooth operation. Made from durable, wear-resistant materials, it is suitable for continuous use and helps improve system stability and extend machine lifespan.



Part : Korea

Assembly : Thailand



Part : Korea

Assembly : Thailand



Type A



Type B

The company maintains stock of both Korean and Chinese parts, with flange sizes ranging from **58 mm to 225 mm**, and torque capacity from **150 Nm to 22,000 Nm**.



Type C

The company maintains stock with flange sizes ranging from **100 mm to 200 mm**, and torque capacity from **1200 Nm up to 16,000 Nm**.



Precision joints Type G (single) and GD (double)



Precision joints Type G (single) and GD (double) are DIN 808 compliant universal joints featuring plain bearings, designed for low-speed (max 1,000 rpm) industrial applications. They offer up to a 45° diffraction angle per joint, available with finish bores (H7) and keyways to handle angular and radial shaft misalignment.

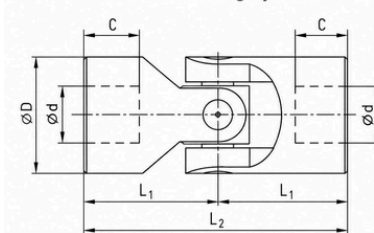


Type G

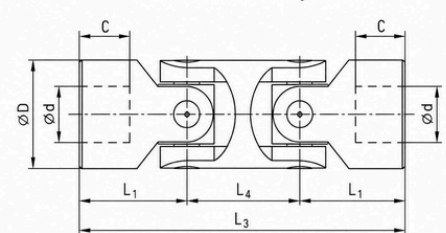


Type GD

Precision single joint G



Precision double joint GD



Type and size				d (H7) (mm)	D (mm)	L2 (mm)	L1 (mm)	C (mm)	L4 (mm)	L3 (mm)	Weight (kg)	
Size G	DIN designation G	Size GD	DIN designation GD								G	GD
01 G	E6 x 16-G	01 GD	D6 x 16-G	6	16	34	17	8	22	56	0.05	0.08
02 G	E8 x 16-G	02 GD	D8 x 16-G	8	16	40	20	11	22	62	0.05	0.08
03 G	E10 x 22-G	03 GD	D10 x 22-G	10	22	48	24	12	26	74	0.10	0.15
04 G	E12 x 25-G	04 GD	D12 x 25-G	12	25	56	28	13	30	86	0.16	0.25
05 G	E14 x 28-G	05 GD	D14 x 28-G	14	28	60	30	14	36	96	0.20	0.40
1 G	E16 x 32-G	1 GD	D16 x 32-G	16	32	68	34	16	37	105	0.30	0.45
2 G	E18 x 36-G	2 GD	D18 x 36-G	18	36	74	37	17	40	114	0.45	0.70
3 G	E20 x 42-G	3 GD	D20 x 42-G	20	42	82	41	18	47	129	0.60	1.00
4 G	E22 x 45-G	4 GD	D22 x 45-G	22	45	95	47.5	22	50	145	0.95	1.55
5 G	E25 x 50-G	5 GD	D25 x 50-G	25	50	108	54	26	55	163	1.20	2.00